


Back to index			EQUIPMENT INFORMATION SHEET				Notes and abbreviations			FOOD EQUIPMENT			Link to PDF file		
ITEM #	QTY		MODEL #	ITEM DESCRIPTION	MANUFACTURER	CONTRACTOR INFORMATION			REMARKS	UTILITY INFORMATION					
	EXT	NEW				I	F	C		ELECTRICAL	MECHANICAL: SUPPLY	MECHANICAL: WASTE			
FE144.A			UC-CWQ	UC service scale system; w/ wireless port	Mettler Toledo	VND		EC CC	Manufacturer to uncrate, set and connect in place. E.C. to provide power. Requires Manufacturer startup.	See Manuf. Specifications					
										EQUIPMENT CELL INFORMATION					
										Date created:	7/31/2012				
										Date revised:	11/12/2015				
										Cell library:	Layout Common Eq.				
										Cell name(s):	CEFE144.A				
										Special CAD Instructions:					
										ITEM NUMBER:		FE144.A			

UC-CWx/UC-GT EVO Specifications

Specifications for UC-CWQ EVO, UC-CWT EVO, & UC-GT EVO scales.

Description	Specifications
Capacity x Division	30 x 0.01 lb, 15 x 0.005 kg, 6/15 x 0.002/0.005 kg multi-interval 15/30 x 0.005/0.001 lb multi-interval
Platter Dimension	W: 15.75" x D: 9.75"
Weight of Unit	30 lb (13.6 kg)
Shipping Weight	40 lb (18.2 kg) Q/GT, 46 lb (20.8 kg) T
Base Construction	Aluminum Die Cast w/sheet metal bottom
Operator Display and Keyboard	12.1" backlit color LCD with touchscreen and LED backlighting
Printer	3" (76 mm) up to 5"/sec thermal, 6" roll capacity
Power	100-240 VAC, 50/60 Hz, 2.2A
Operating Temperature	0° C to 40° C, humidity 5% to 95% non condensing
Storage Temperature	-20° C to 70° C with humidity from 5% to 95% non condensing
Network Interface	Ethernet 100/10 MBPS, Optional WiFi
Processor	1.60 GHz ATOM N270 or 1.66 GHz ATOM D10 Dual Core
Memory	1GB (2GB optional)
Mass Storage	160 GB or larger SATA hard drive
Customer Display	UC-CWQ - Color 5.7" QVGA UC-CWT - Color 12.1" SVGA
Available Serial port	One
USB ports	2 available
Other options	Mini PCI WiFi (802.11 a/b/g)
Operating System	Windows® XP Embedded or Linux open-SUSE 10.3 (Q w/N270 only)



UC-CWQ

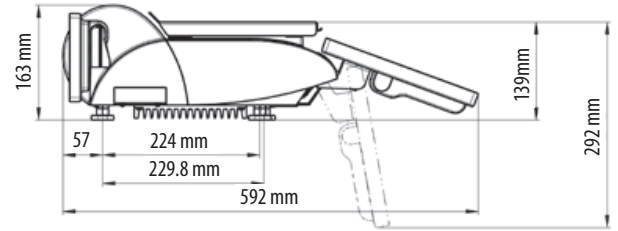
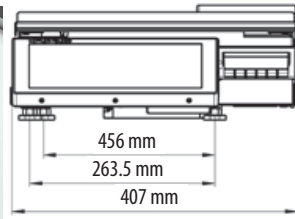


UC-CWT

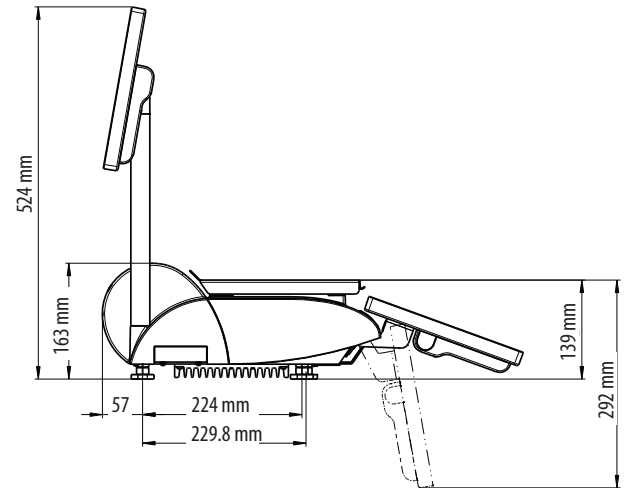
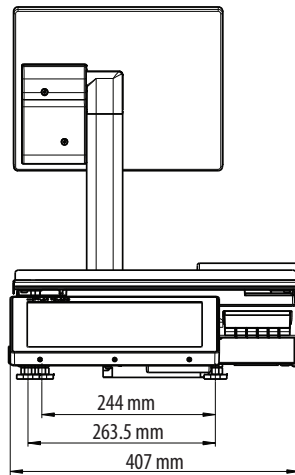


UC-GT

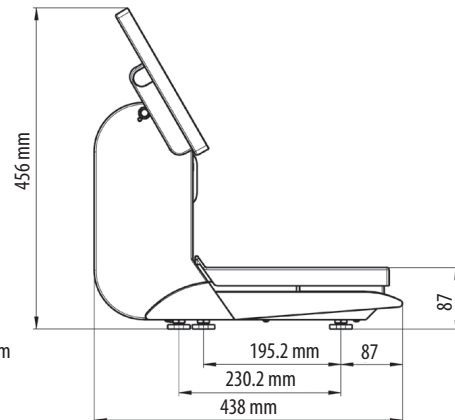
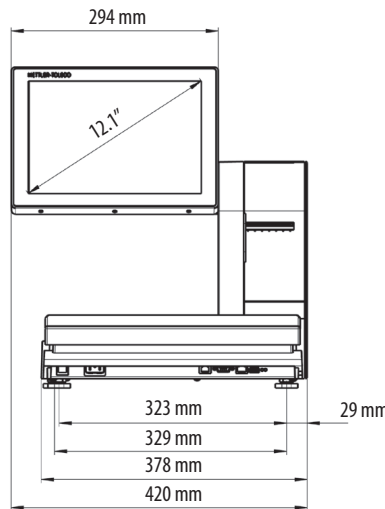
METTLER TOLEDO



UC-CWQ Dimensions (mm)



UC-CWT Dimensions (mm)



UC-GT Dimensions (mm)

Counter Scales



UC Evo Line

- Enhance Your Brand
- Promote Sustainability
- Integrate Applications



Form Meets Function

Evolution in Fresh

METTLER TOLEDO

Form Meets Function

Evolution in Fresh

The UC Evo Line is our most advanced line of counter scales. Capable of integrating with countless third party applications, the PC-based scales will become the hub of your fresh department. The large operator touchscreen with graphical presets makes it easier for operators to access the information they need. Its advanced functionality is matched only by its impressive design. Sleek and modern with a color, VGA, LCD customer display with in-store marketing capabilities, it's sure to impress. The UC Evo Line, where form meets function.



UC-CWQ

Performance in Color

With its faster processor, the UC-CWQ is designed to meet the demands of third-party application integration. Offering a 5.7" color, VGA, LCD customer display, your store brand and logo are reinforced with every sale. The easy to operate and manage UC-CWQ is our best-in-class and most economical choice for retailers who want ultimate ease-of-use.



UC-CWT

Ultimate Marketing Tool

Ideal for retailers wanting to increase sales and maximize the return on their investment. Through dynamic product marketing, the UC-CWT facilitates more personal associate and customer interaction, right at the scale. Its lightning fast processor and 12.1" color, SVGA, LCD customer display makes every transaction a superior shopping experience.



UC-GT

Self-Serve

The UC-CWQ and the UC-CWT are both available as self-serve options, with or without a mounted scanner. They offer a compact, low profile scale with a 12.1" user touchscreen located at the height of the scale platter. As an alternative, the UC-GT has an upper 12.1" operator touchscreen with the printer located on the tower, for easy access by the consumer when the scale is mounted on lower height stands. METTLER TOLEDO can work with you to configure a self-serve solution that meets your needs.



The lightning-fast Intel® 1.60 GHz Processor is designed to meet the demands of third-party application integration.



The large 6" label roll capacity means less downtime changing label rolls.

The high resolution thermal printer supports all Windows® fonts and prints professional-looking labels that will reinforce your store brand and help build shopper loyalty.

The 12.1" color, VGA, LCD operator touchscreen with graphical presets is ergonomically designed to be adjustable, accommodating the varying heights of your associates.

Enhance Your Brand

Improve Shopper Experience

In-Store Marketing

With capabilities to run visual sales promotions and cross-selling ad campaigns, the UC Evo Line will attract customers. Optional transparency settings allow for the PLU and weight information to display on top of promotional material.

State-of-the-art Design

The sleek and modern profile of the UC Evo Line and LCD customer display (5.7" or 12.1" tower version) will enhance your store image. The adjustable angle customer display and swivel tower (on the UC-CWT) will suit the requirements of your store and keep communication between customers and employees flowing.



Label Printing

With extensive support for custom logos, pre-printed designs and complex layout requirements, UC Evo Line scale labels reinforce store brands and help build shopper loyalty.



Promote Sustainability

Increase Energy Efficiency

We are committed to offering products that are sustainable. The UC Evo Line is our “greenest” product line to date offering energy savings that are tangible. As with all of our products, the UC Evo Line scales contain no lead, no mercury, and no other hazardous substances, and our manufacturing process complies with strict guidelines from RoHS and WEEE. It’s an investment you can feel good about.



LED Backlighting

Thanks to the latest LED technology, the customer and operator displays are brighter and more vivid with better contrast, all while reducing power consumption.

Idle Modes

All of the scales feature energy-saving modes that can be configured using software.

Energy Efficient Fan

Waste heat is dissipated via the aluminum housing. The scale fan operates only as needed.

Faster Processor

The lightning-fast Intel® 1.60 GHz Processor provides enhanced computing performance while using less power.

Integrate Applications

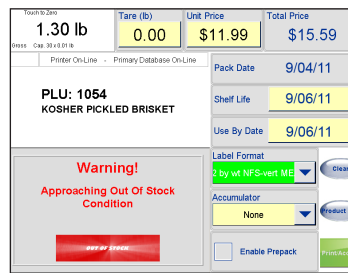
Maximize Operational Efficiency

With the UC Evo line of PC-based scales, integration options are endless. On the customer side, integrations include Fresh Look Promoter, couponing, deli queuing, Meal Planner and more. For operators, integrations include Fresh Look Advisor, fresh item management, employee training, time-card management, equipment maintenance and more.

With the vast amount of processes your associates are responsible for on a daily basis, consolidating or integrating those systems can greatly help to simplify workflows and improve operational efficiency.



On-Scale Coupons



Fresh Item Management



Meal Planner

Network Integration

In addition to integrating with other applications, the UC Evo Line of scales seamlessly integrate into existing IT infrastructures and are easily managed as PCs. Based on Windows XP-Embedded or Linux, UC scales leverage industry-standard management tools.

You can reduce the number of on-site service calls while dramatically lowering IT costs by automatically administering chain-wide updates.



Gross	1.000lb	Tare	0.005lb	Unit Price / lb	\$5.99	Total Price	\$5.99
Cap: 10.0000 lb							
ROAST BEEF							

your store
always fresh

Fresh Farm's
American Cheese Slices

sale **\$3.99/lb.**

Ask for a coupon for \$1.00 off our fresh
baked whole wheat bread

Boost Sales

The large 12.1" customer display is designed to present relevant marketing videos, animations, images and text exactly when they are most effective. Each item selected by the operator can offer cross-promotions of related center-store items or other store promotions to customers. Integrating with Fresh Look Promoter facilitates this process by making it easier to create, manage, and distribute promotions and offers throughout your enterprise.

your store
always fresh

Description:

- Semi-soft to hard texture, made from cow's milk
- Similar to Edam; mild and nutty to buttery taste, but richer flavor
- Aged between 1 and 6 months, becomes spicier and more robust with age
- Substitutes well for cheddar in macaroni and cheese recipes

PLU: Gouda Cheese

PRODUCT INFO
GOOD WITH
PREPARATION

Empower Associates

Provide sales associates with the information they need to make suggestive selling and give expert advice to customers. Operators can access colorful, professionally designed and printable information including preparation instructions, "good-with" tips and product information. Boost staff efficiency and lower training costs by putting professional selling information at associates' fingertips. Integrating with Fresh Look Advisor facilitates this process by making it easier to create, manage, and distribute this information to your associates.

Professional Services

The sky is the limit when integrating your applications into UC Evo Line scales. Our professional services team can help integrate a wide variety of helpful tools right at the scale.

Whether it's boosting sales or reducing shrink, we're ready to help you meet your revenue, workflow and performance goals.



Call on METTLER TOLEDO's expertise to:

- Maximize the uptime of your equipment by providing reliable on-site and remote service for all your weighing equipment, regardless of manufacturer
- Ensure you stay in compliance with government regulatory standards
- Integrate your applications
- Request professional consulting

Mettler-Toledo, Inc.
1900 Polaris Parkway,
Columbus, OH 43240
Tel. (800) 523-5123
(614) 438-4511
Fax (614) 438 4900

METTLER TOLEDO® is a registered trademark of Mettler-Toledo Inc. All other brand of product names are trademarks of their respective companies.

Subject to technical changes
©2011 Mettler-Toledo Inc.
Printed in USA
MarCom MTWT

RT1241.OE

www.mt.com

Visit for more information



ServiceXXL
Tailored Services

Quality Management System certification. Development, production, and auditing in accordance with ISO9001. Environmental management system in accordance with ISO14001.

Tailored Services. Our extensive service network is among the best in the world and ensures maximum availability and service life of your product.



Conformité Européene
This label is your guarantee that our products conform to the latest guidelines.