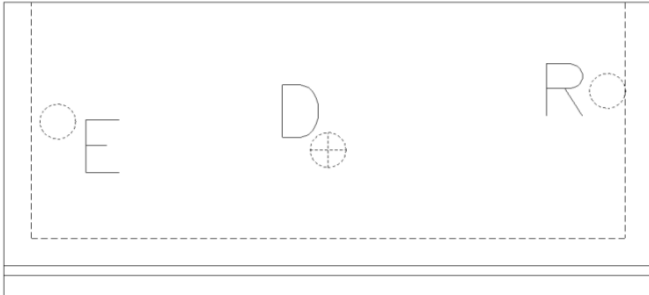
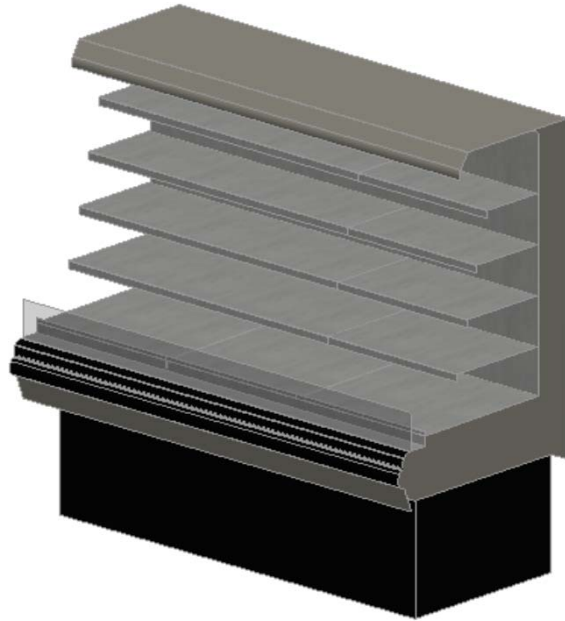


Back to index		EQUIPMENT INFORMATION SHEET				Notes and abbreviations			REFRIGERATION - MEDIUM TEMP.			Link to PDF file
ITEM #	QTY		MODEL #	ITEM DESCRIPTION	MANUFACTURER	CONTRACTOR INFORMATION			REMARKS	UTILITY INFORMATION		
	EXT	NEW				I	F	C		ELECTRICAL	SUPPLY	MECHANICAL:WASTE
RM77.3-06CG			IM-05-16-S	6' ISLA Cold Center Case - self contained- exterior chelsea grey - interior stainless steel.	Hussmann	FC	VND	EC	Install per Manufacturer's specifications.	See Manuf. Specifications		
										EQUIPMENT CELL INFORMATION		
										Date created:		8/19/2013
										Date revised:		9/2/2015
										Cell library:		layout_refrigeration
										Cell name(s):		See below
Special CAD Instructions:										RM77.3-HS-IM0516S-06CG		
										ITEM NUMBER:		RM77.3-06CG



HUSSMANN®

Specialty



Isla Family

IM-S

Isla Refrigerated Multi-Deck, Self-Service,
Self-Contained Merchandiser

www.hussmann.com

Hussmann Isla Refrigerated Multi-Deck, Self-Service, **Self-Contained** Merchandiser for C-Store, Foodservice, and Supermarket Applications

IM-S

Heights: 64" (04); **72" (05)**

Types: Back-to-Back (04-T Only);

In-Line (I)

Lengths: **IM-04-T**: 3', 4', and 5'

IM-04-I: 3', 4', 5', 6', and 8'

IM-05-I: 3', 4', 5', **6'**, and 8'

- Designed for Multiple Applications... C-Store, Foodservice, and Supermarket.

Type 1 (75°F, 55% R.H.)

Type 2 (80°F, 55% R.H.)

- Reduced maintenance cost and improved reliability.

Removable intake air filter does not require a service call.

- DOE Compliant.

Meets DOE 2012 regulations for self-contained open displays.

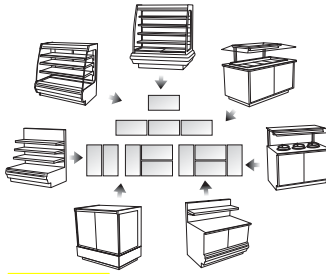
- LED Lighting.

Optional LED lighting is available.

- Adjustable Temperature Control.

New convertible temperature case for beverage, deli, and meat temperatures.

Design Your Own Merchandiser



Stand Alone, In-Line, 2, 3, 4-Sided Island

Deli, Prepared Food, Bakery, Hot Food, Produce, Meat, Beverage, Seafood...

- Implemented Noise Reducing Solutions.

All models run at below 70db levels to improve the customer experience.

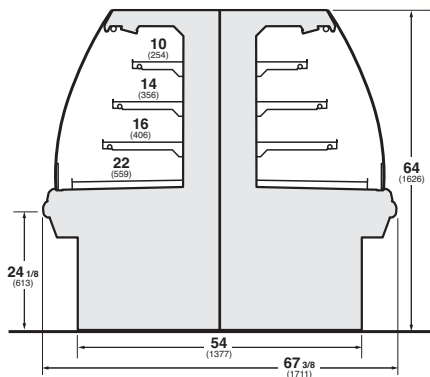
- Back-to-Back (Twin).

IM-04-Tx-S (Back-to-Back in 04 Only) See www.hussmann.com for more cross section options.

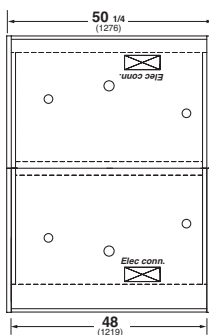


IM-05-1x-S End or Combo Center Case

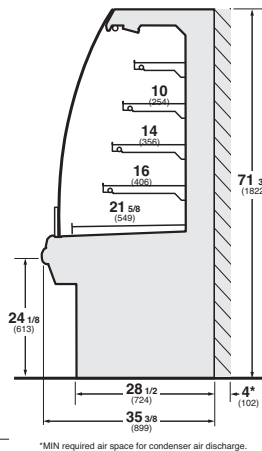
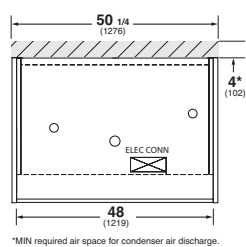
IM-04-Tx-S Back-to-Back Multi-Deck Self-Service Self-Contained



IM-04-T4-S Refrigerated Multi-Deck Self-Service Self-Contained



IM-05-14-S Refrigerated Multi-Deck Self-Service Self-Contained



*MIN required air space for condenser air discharge.

Features and Benefits:

- Condensing unit
- Electronic thermostat controls
- Module coil system – 5 year warranty
- Evaporator pan
- Adjustable temp control for beverage, deli and meat products
- Black interior
- Painted exterior
- T-5 lighting - required with clear ends †
- LED lighting required with solid ends †
- Energy efficient fans
- Electronic ballast
- Solar digital thermometer
- Please reference color chart for choice of standard Hussmann paint and finish options

Options Include:

- Adjustable shelves with tag molding
- Plex product stop
- Peg bar shelving
- White interior
- Night shade
- Stainless steel interior
- End panel, flush: solid, view, Autobrite interior
- End panel with wrap-around bumper: solid, view, Autobrite interior
- Finished exterior back cover (In-Line) painted, stainless steel
- Special interior and exterior finishes* (consult your Hussmann sales representative)

Additional Information:

- Matching companion case lines: **ISLA Family**
- Refrigerated Self-Service Multi-Deck: **IM-R**
- Hot Self-Service Multi-Deck: **IM-H**
- Refrigerated Self-Service Food Counter: **IM-FR**
- Hot Self-Service Food Counter: **IM-FH**
- Soup Self-Service Food Counter: **IM-FS**
- Refrigerated/Dry Self-Service Bakery: **IM-BV**
- Frozen Self-Service: **SFG/SFNG**

DOE 2012 Energy Efficiency Compliant

Hussmann refrigerated merchandisers configured for sale for use in the United States meet or surpass the requirements of the DOE 2012 energy efficiency standards.

* Some optional features may need to be certified by UL, NSF, and/or other 3rd party certification agencies. Contact Hussmann for verification or questions for availability.

† Only lighting configurations that are compliant with the U.S. Dept. of Energy (DOE) 2012 regulation are available for sale for use in the U.S.A.

NOTE: These merchandisers are designed for use in stores when temperature and humidity do not exceed 75°F and 55% R.H. We reserve the right to change or revise specifications and product design in connection with any feature of our products. Such changes do not entitle the buyer to corresponding changes, improvements, additions, or replacements for equipment previously sold or shipped.

For additional resources, contact your representative or visit www.hussmann.com.

Note.

Use Hussmann's technical data sheets to get precise dimensions for all store layout purposes.



HUSSMANN®

Hussmann Specialty
13770 Ramona Avenue
Chino, California 91710-5423
Ph: 800.395.9229

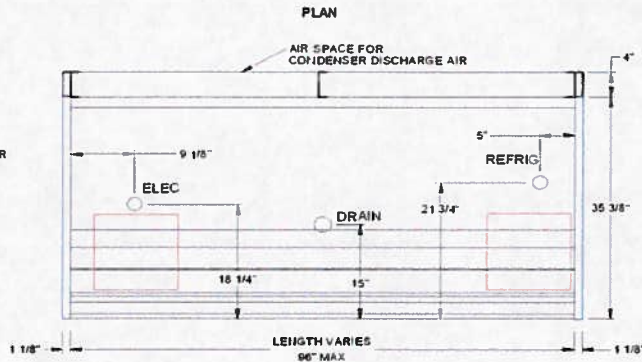
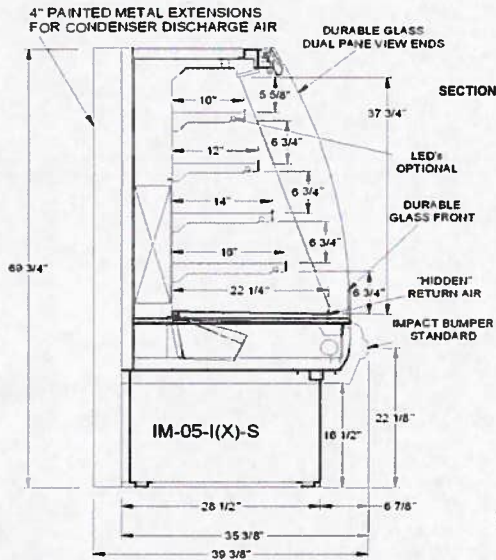
www.hussmann.com



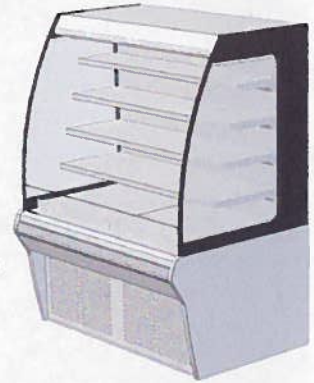
MEDIUM TEMP SELF SERVICE MULTI-DECK SELF CONTAINED
ISLA - IM-05-(E or C)(XX)-S CASE MODULES [ISLA](CHINO)



Hussmann refrigerated merchandisers configured for sale for use in the United States meet or surpass the requirements of the DOE 2012 energy efficiency standards.



PHOTO



REFRIGERATION DATA:

MODULE LENGTH	CASE USAGE	CONSUMPTION ***	DISCHARGE AIR VELOCITY	DISCHARGE AIR TEMPERATURE	EST. REFER CHARGE (LBS)
		(BTU / HR)	(FT / MIN)	(°F)	
3'	DELI/DAIRY	3968	250	32	1.4
3'	MEAT	5077	250	28	1.4
4'	DELI/DAIRY	5290	250	32	1.9
4'	MEAT	6770	250	28	1.9
5'	DELI/DAIRY	6613	250	32	2.3
5'	MEAT	8462	250	28	2.3
6'	DELI/DAIRY	7935	250	32	2.8
6'	MEAT	10154	250	28	2.8
8'	DELI/DAIRY	10580	250	32	3.7
8'	MEAT	11500	250	28	3.7

* Offered in R 404A only

LEGEND

N/A - NOT AVAILABLE
TBD - TO BE DETERMINED
MODULE NOMENCLATURE KEY:
IM ISLA MODULE
04 or 05 50 or 58" HIGH
E or C END or CENTER CASE
-ES MODULE LENGTH IN FEET
R or S REMOTE or SELF CONTAINED
EXAMP: IM-04-ES-R = ISLA MODULE, 60" HIGH, END 5" WIDE, REMOTE
LE:

REFRIGERATION SETPOINTS

ELECTRONIC CONTROLLER / SAFENET SETTINGS			
USAGE	CUT IN (°F)	CUT OUT (°F)	SAFENET SETTING
DELI/DAIRY	34.0	25.0	5
MEAT	28.0	18.0	8

***** REFRIGERATION NOTES:**

- 1) TEST CONDITIONS: 75°F/55% RH
- 2) SUBJECT TO CHANGE BASED ON DESIGN CHANGES
- 3) MEAT CASE SPECS ARE FOR PACKAGED MEAT (L.E.D.'S ONLY); BTU'S INCLUDE 1 ROW L.E.D. CANOPY LIGHTING
- 4) ADD 12 BTUS/FT PER ROW OF LED LIGHTS.
- 5) ADD 23 BTUS/FT PER ROW OF LED LIGHTS.

ELECTRICAL DATA:

MODULE LENGTH	STANDARD FANS AND HEATERS (120 VOLT)						LIGHTING: 120V INPUT VOLTAGE												PLUG TYPE*
	# EVAP. FANS	TOTAL STANDARD FANS		TOTAL EE FANS		T5 CANOPY LIGHTS (DELI ONLY)		L.E.D. CANOPY LIGHTS		# ROWS	T5 SHELF LIGHTS (DELI ONLY)		L.E.D. SHELF LIGHTS		T5 TOTAL LIGHTS (DELI ONLY)		L.E.D. TOTAL LIGHTS		
		AMPS	WATTS	AMPS	WATTS	AMPS	WATTS	AMPS	WATTS		AMPS	WATTS	AMPS	WATTS	AMPS	WATTS	AMPS	WATTS	
3'	1	0.62	53.5	0.30	18.0	0.19	21.0	0.11	11.0	4	0.78	84.0	0.43	44.0	0.97	105.0	0.54	55.0	L14-30P
4'	1	0.62	53.5	0.30	18.0	0.26	28.0	0.14	14.4	4	1.04	112.0	0.57	57.6	1.30	140.0	0.71	72.0	L14-30P
5'	1	0.62	53.5	0.30	18.0	0.32	35.0	0.18	18.5	4	1.30	140.0	0.73	74.0	1.62	175.0	0.91	92.5	L14-30P
6'	2	0.62	53.5	0.30	18.0	0.40	42.0	0.22	22.0	4	1.56	168.0	0.89	90.0	1.94	204.0	1.11	112.5	L14-30P
8'	2	1.24	107.0	0.60	36.0	0.52	56.0	0.28	28.8	4	2.07	224.0	1.13	115.2	2.59	280.0	1.41	144.0	CS-8365-C 50A

* PLUG TYPE IS BASED ON STANDARD FEATURES

ELECTRICAL DATA CONTINUED:

MODULE LENGTH	CONDENSING UNIT 1 PHASE			DRAIN EVAP PAN 240V 1 PHASE		EVAP PAN RUN TIME	CONVENIENCE OUTLETS (Optional)			MODULE LENGTH	DEFROST TYPE	TIME (MIN.)	TERM TEMP (°F) COIL ONLY	DRIP TIME (MIN.)	DEFROST PER DAY	ELECTRICAL DEFROST 208V 1 PHASE		DEFROST WATER (LB/DAY)
	AMPS @ VOLTS	H.P.	WATTS	AMPS	WATTS		#OUTLETS	VOLTS	AMPS							AMPS	WATTS	
	3'	6.8 @ 208V	3/4	1120	4.2		1000	%	N/A							N/A	N/A	
4'	9.0 @ 208V	1	1500	4.2	1000	%	N/A	N/A	N/A	4'	OFF TIME	25	48	N/A	4	N/A	N/A	24
5'	9.6 @ 208V	1 1/4	1880	6.3	1500	%	N/A	N/A	N/A	5'	OFF TIME	25	48	N/A	4	N/A	N/A	30
6'	12.4 @ 208V	1 1/2	1870	6.3	1500	%	N/A	N/A	N/A	6'	OFF TIME	25	48	N/A	4	N/A	N/A	36
8'***	18 @ 208V	2	3000	8.3	2000	%	N/A	N/A	N/A	8'	OFF TIME	25	48	N/A	4	N/A	N/A	48

***Combined rating of (2), 1 HP condensing units

OPTIONS/NOTES:

Standard Shelves: 10", 12" 14", 16"

1. SELF CONTAINED OFFERED ONLY UP TO 8'