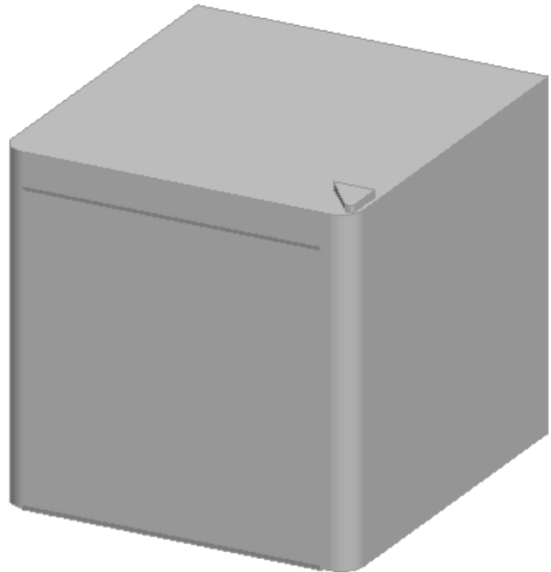
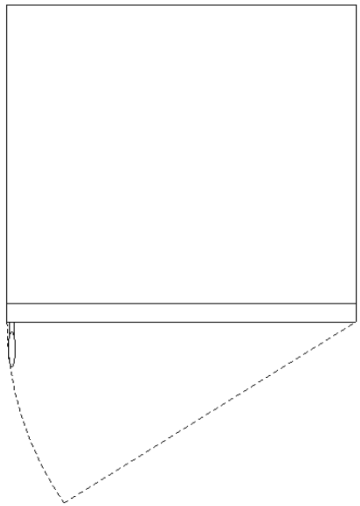


ITEM #	QTY		MODEL #	ITEM DESCRIPTION	MANUFACTURER	CONTRACTOR INFORMATION			REMARKS	UTILITY INFORMATION		
	EXT	NEW				I	F	C		ELECTRICAL	MECHANICAL:	MECHANICAL:
RX112.2			CMF151L	Under counter Vaccine Freezer 18.5"W x 20.25"D x 19.5"H (White)	Edgestar	FC		EC	Install per manufacturer's specifications. E.C. to provide power.(Standby CKT) External alarm monitoring system installed by others. See Manuf. Specifications			

EQUIPMENT CELL INFORMATION	
Date created:	10/8/2010
Date revised:	9/15/2017
Cell library:	layout_hardlines.cel
Cell name(s):	HLRX112.2

**Special CAD Instructions:**



<b>ITEM NUMBER:</b>	<b>RX112.2</b>
---------------------	----------------



Accenting Your Life on the Go

[Home](#)

[Products](#)

[Customer Support](#)

[About Us](#)

[Contact Us](#)

[Purchase](#)

[Portable Air Conditioners](#)

[Air Coolers](#)

[Ice Makers](#)

[Wine Coolers](#)

[Dishwashers](#)

[Refrigerators/Freezers](#)

[Beer Dispensers](#)



## EdgeStar® Refrigerators & Freezers

Full-sized features in a stylish compact package.

### Model CMF151L - EdgeStar 1.5 cu. ft. Medical Freezer with Lock - White

The EdgeStar CMF151L compact medical freezer is truly in a class of it's own. This 1.5 cu. ft. capacity freezer is a cube sized, all purpose freezer with a reversible door and a front mounted security lock. This stylish and affordable upright unit features high quality construction and superior freezing power unavailable in other similar size models. Offering thermostat controlled low temperature operation, this unit can reach temperatures as low as -20°C. That is well below -5°C at which many similar compact freezers operate.

Other key features of the EdgeStar CMF151L compact medical freezer include manual defrost for temperature stability, a modern euro-style door with recessed handle, magnetic gasket and is highly energy efficient for such a powerful and compact unit.

Do you want superior freezing power from your all purpose compact? Need to store temperature sensitive supplies in a tight space? Need added security for your home or office freezer? Look no further - the EdgeStar CMF151L compact medical freezer is the ideal choice for securely storing anything from home or office foods to medication and vaccines!

#### Features:

- 1.5 cubic feet of storage
- High quality deluxe compact upright freezer designed for medical and laboratory usage
- Adjustable thermostat reaching minimum temperatures of -20° C (-4°F)
- Modern European style
- Wire shelf included
- Magnetic door gasket
- Lock and two keys included
- Towel bar handle
- Energy-saving manual defrost
- Adjustable leveling legs

#### Specifications:

Model:	CMF151L
Installation Type:	Freestanding
Type of Controls:	Manual adjustable thermostat
Maximum Capacity:	1.5 cubic feet
Accessories:	1 Plastic ice tray; 1 Plastic ice scraper
Type of Shelving :	1 wire
Number of Shelves:	1
Door Type:	Single European style door with towel bar handle
Reversible Door:	Yes
Door Storage:	No

#### More Information:

- [How Does It Work?](#)
- [Why Buy EdgeStar?](#)
- [Installation](#)
- [Where to Buy?](#)

#### Accessories:



**Ice Scrape**  
Scrape off ice that has formed inside your freezer.



**Ice Tray**  
Make ice cubes inside your freezer.



**Model CRF150SS**  
EdgeStar 1.5 cu. ft. Freezer with Lock - Stainless Steel



**Model CMF151L**  
EdgeStar 1.5 cu. ft. Medical Freezer with Lock - White



**Model CRF320SS**  
EdgeStar 2 Door 3.2 cu. ft. Stainless Refrigerator



**Model FP430**  
EdgeStar Portable Fridge/Freezer - 43 Qt.



**Model FP630**  
EdgeStar Portable Fridge/Freezer - 63 Qt.



**Model FP860**  
EdgeStar Portable Fridge/Freezer - 86 Qt.

Lighting:	None
Leveling Legs:	Yes
Security Lock:	Yes; 2 Keys included
Defrost Method:	Manual
Temperature Range:	Freezer: -20°C to 0°C
Noise Level:	39 Db
Safety Approval:	UL
Cooling Method:	Compressor
Refrigerant:	R134A
Color:	White
Weight:	46.2 lbs
Warranty	90 Days labor; 1 Year parts

**Unit Dimensions:**

Outer Height:	19 1/2"
Outer Width:	18 1/2 "
Outer Depth:	17 3/4"
Outer Depth with Handle:	20 1/4"
Inner Height:	14"
Inner Width:	14"
Inner Depth:	13"

There is a compressor step that is 7 1/2"h x 5 1/2"d that runs the full width of the machine

**Energy Guide:**

Input Power :	67W
Voltage:	115V / 60Hz
Current:	0.58 Amps
Power Cord Length	6 feet

**Product Applications**

EdgeStar is an industry leader in the compact appliance field, developing compact and portable appliances designed for today's busy lifestyles. When you purchase an EdgeStar product, you are guaranteed to get a quality, innovative product and you can count on EdgeStar's top flight customer service organization to stand behind the product with all aspects of customer support, from installation to service and more.

[Home](#) | [Products](#) | [Customer Support](#) | [About Us](#) | [Contact Us](#) | [Purchase](#) | [Site Map](#)  
 ©Copyright 2005-2009 Living Direct, Inc. All Rights Reserved. | [Terms of Service](#) | [Privacy Policy](#)