

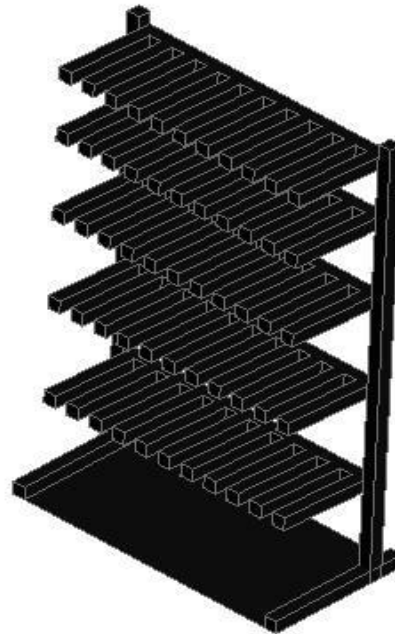
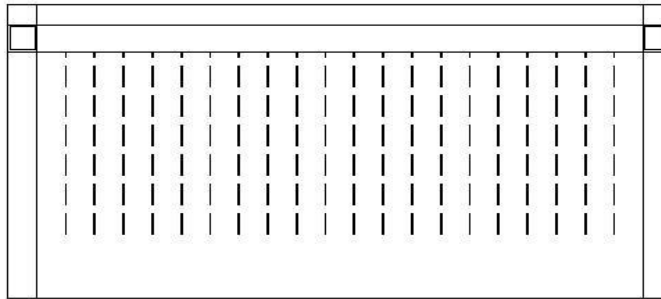


ITEM INFORMATION COVER SHEET

			CONTRACTOR INFORMATION				UTILITY INFORMATION			
ITEM #	MODEL #	MANUFACTURER	ITEM DESCRIPTION	I	F	C	REMARKS	ELECTRICAL	SUPPLY	MECHANICAL: WASTE
SP111	RK-46	Cap Barbell	Free Weight Display - Vendor	VND	VND		Install per Manufacturer's specifications.			

PARTS LIST:

1 RK-46



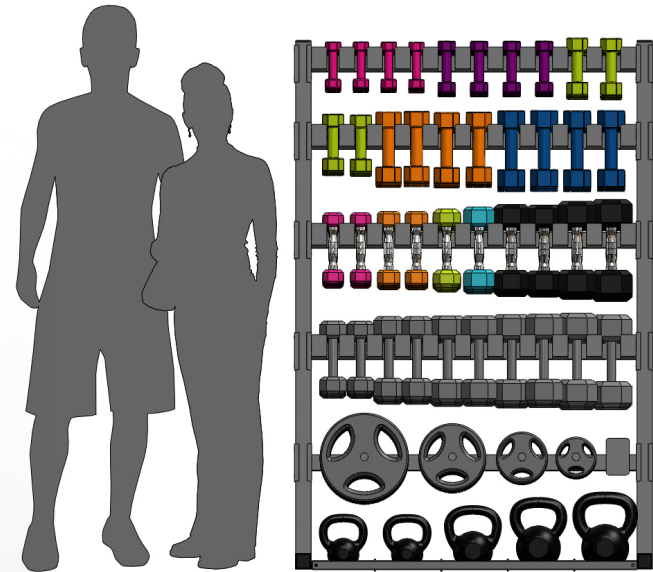
EQUIPMENT CELL INFORMATION	
Date Revised:	10/25/2019
Date Created:	
Cell library:	layout_hardlines
Cell name(s):	HLSP111

Additional Information:
[Installation Instructions](#)

ITEM NUMBER:

SP111

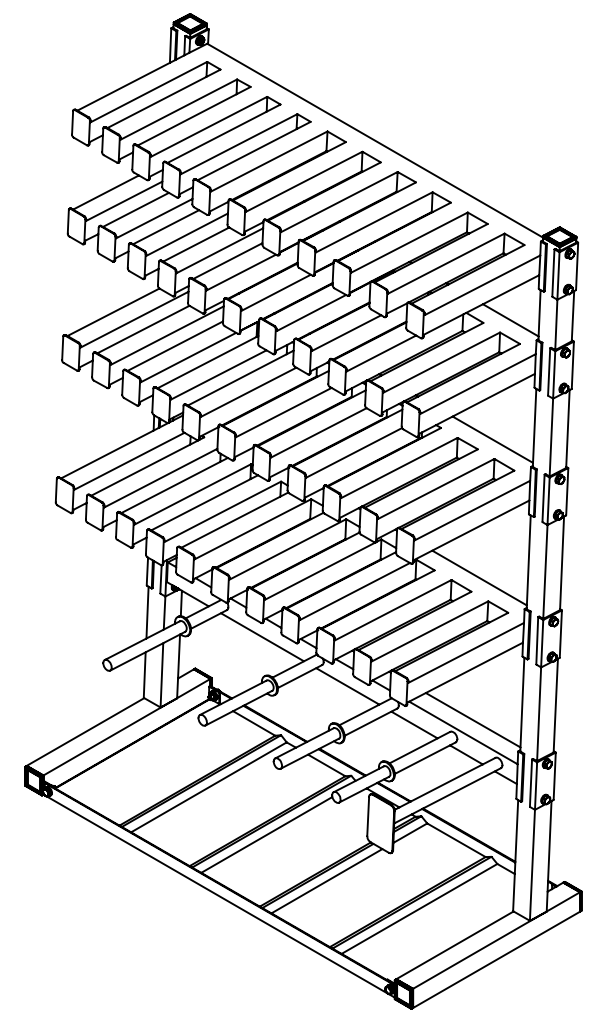
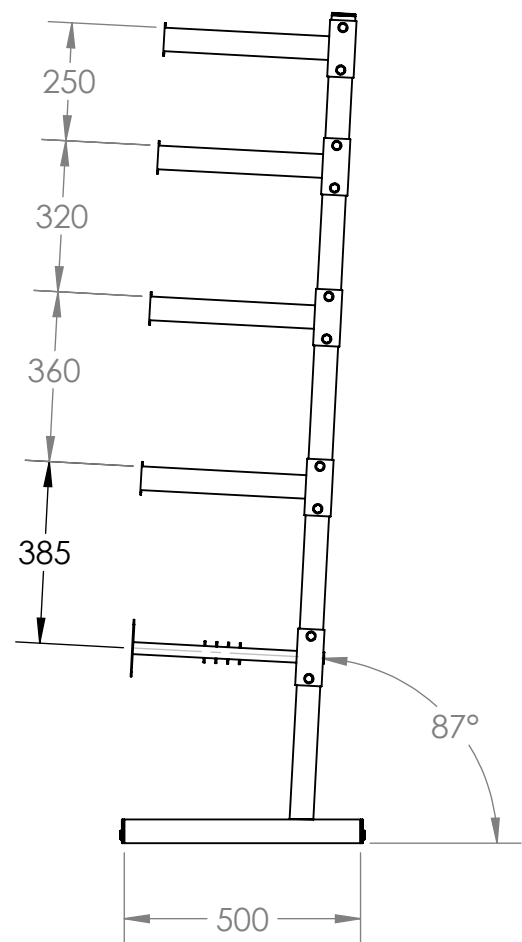
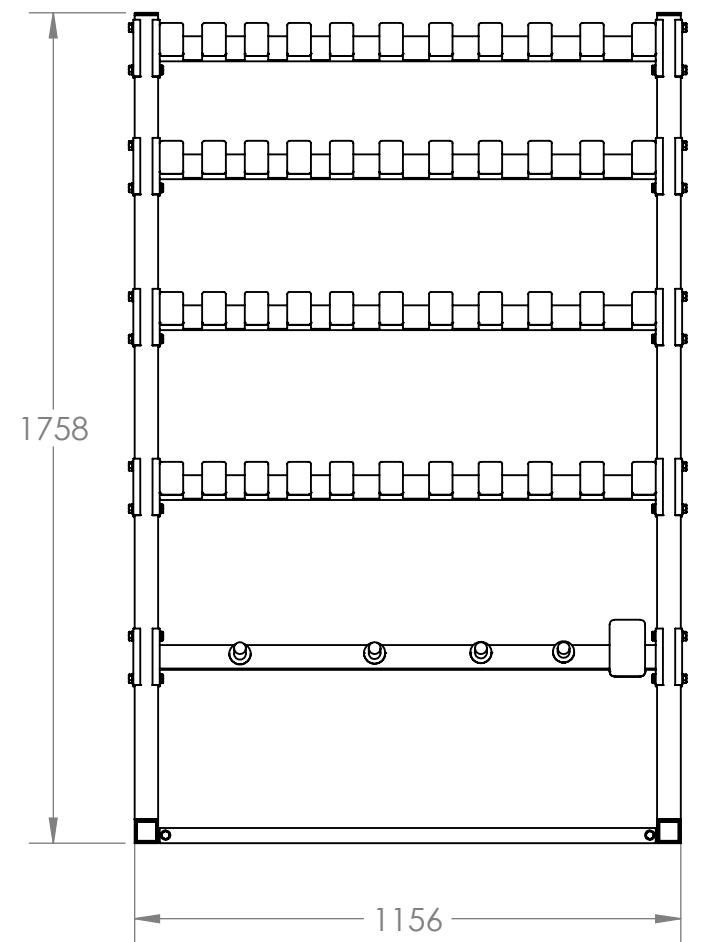
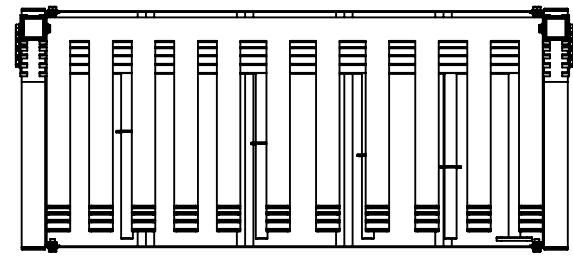
SDN4 - NEOPRENE DUMBBELLS		
SIZE	QTY	WEIGHT
2	28	56
3	24	72
5	20	100
8	20	160
10	16	160
		548
SDR2 - COLORED RUBBER DUMBBELLS		
SIZE	QTY	WEIGHT
3	12	36
5	10	50
8	4	32
10	4	40
		158
SDR - BLACK RUBBER DUMBBELLS		
SIZE	QTY	WEIGHT
15	6	90
20	3	60
25	3	75
		225
SDG - GRAY CAST IRON DUMBBELLS		
SIZE	QTY	WEIGHT
10	8	80
15	8	120
20	6	120
25	6	150
30	5	150
		620
RWP - 1" WEIGHT PLATES		
SIZE	QTY	WEIGHT
2.5	6	15
5	6	30
10	6	60
25	6	150
		255
SDK2 - KETTLEBELLS		
SIZE	QTY	WEIGHT
10	4	40
15	4	60
20	4	80
25	4	100
35	3	105
		385
TOTAL WEIGHT		2191



COMMENTS:		CAP BARBELL	
		ITEM NUMBER:	
		RK-46	
PROPRIETARY AND CONFIDENTIAL		DESCRIPTION:	REV
THE INFORMATION CONTAINED IN THIS DRAWING IS THE SOLE PROPERTY OF CAP BARBELL. ANY REPRODUCTION IN PART OR AS A WHOLE WITHOUT THE WRITTEN PERMISSION OF CAP BARBELL IS PROHIBITED.		VERTICAL FREE WEIGHT DISPLAY	
UNLESS OTHERWISE SPECIFIED: DIMENSIONS ARE IN MILLIMETERS TOLERANCES: ±0.5 ANGULAR: BEND ±0°30 TWO PLACE DECIMAL ±0.25 THREE PLACE DECIMAL ±0.13		FINISH: BLACK HAMMERTONE	DRAWN AR DATE 4/10/14

8 7 6 5 4 3 2 1

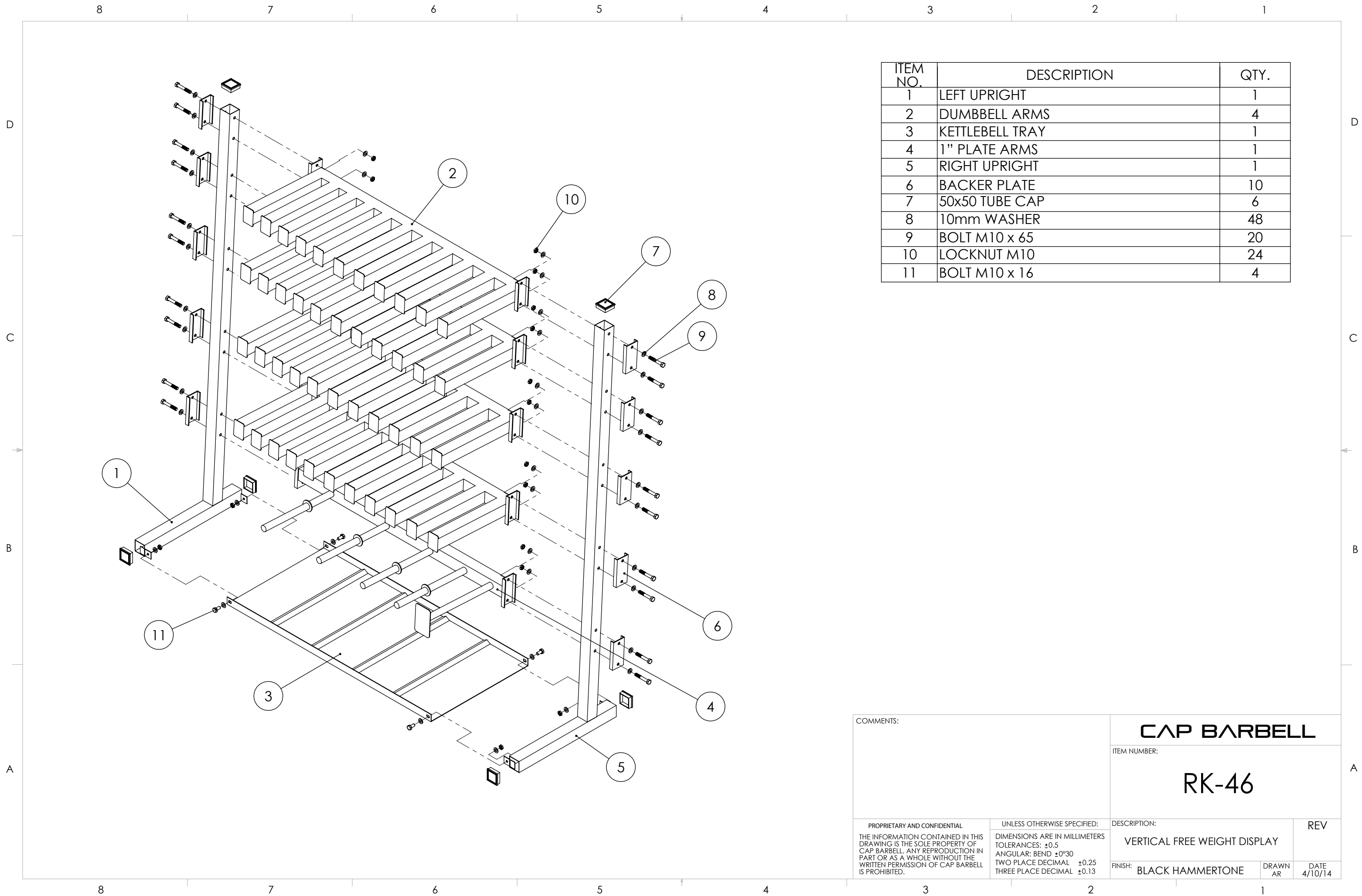
D
C
B
A



D
C
B
A

8 7 6 5 4 3 2 1

COMMENTS:		CAP BARBELL	
		ITEM NUMBER: RK-46	
PROPRIETARY AND CONFIDENTIAL THE INFORMATION CONTAINED IN THIS DRAWING IS THE SOLE PROPERTY OF CAP BARBELL. ANY REPRODUCTION IN PART OR AS A WHOLE WITHOUT THE WRITTEN PERMISSION OF CAP BARBELL IS PROHIBITED.	UNLESS OTHERWISE SPECIFIED: DIMENSIONS ARE IN MILLIMETERS TOLERANCES: ±0.5 ANGULAR: BEND ±0°30 TWO PLACE DECIMAL ±0.25 THREE PLACE DECIMAL ±0.13	DESCRIPTION:	REV
		VERTICAL FREE WEIGHT DISPLAY	
FINISH: BLACK HAMMERTONE		DRAWN AR	DATE 4/10/14

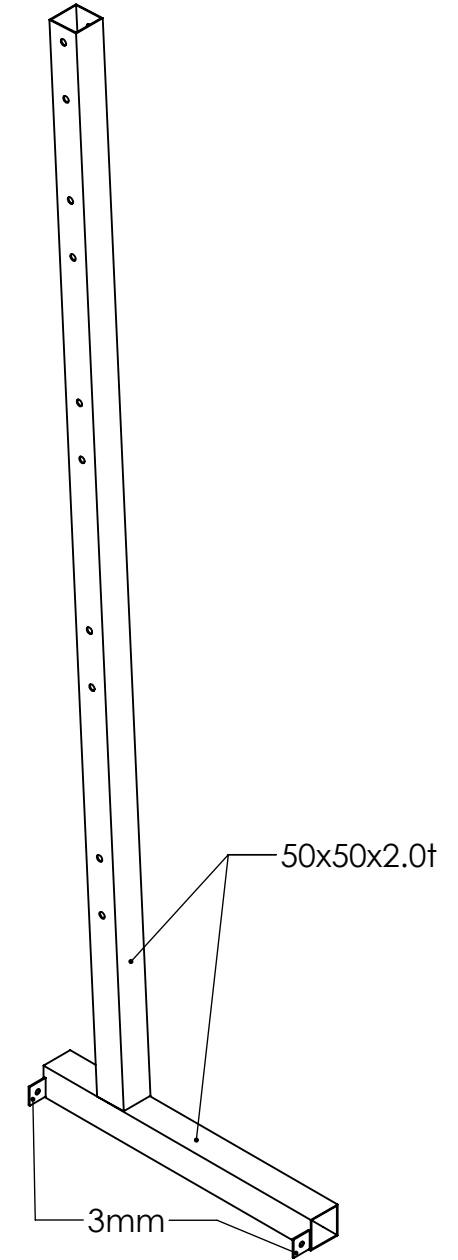
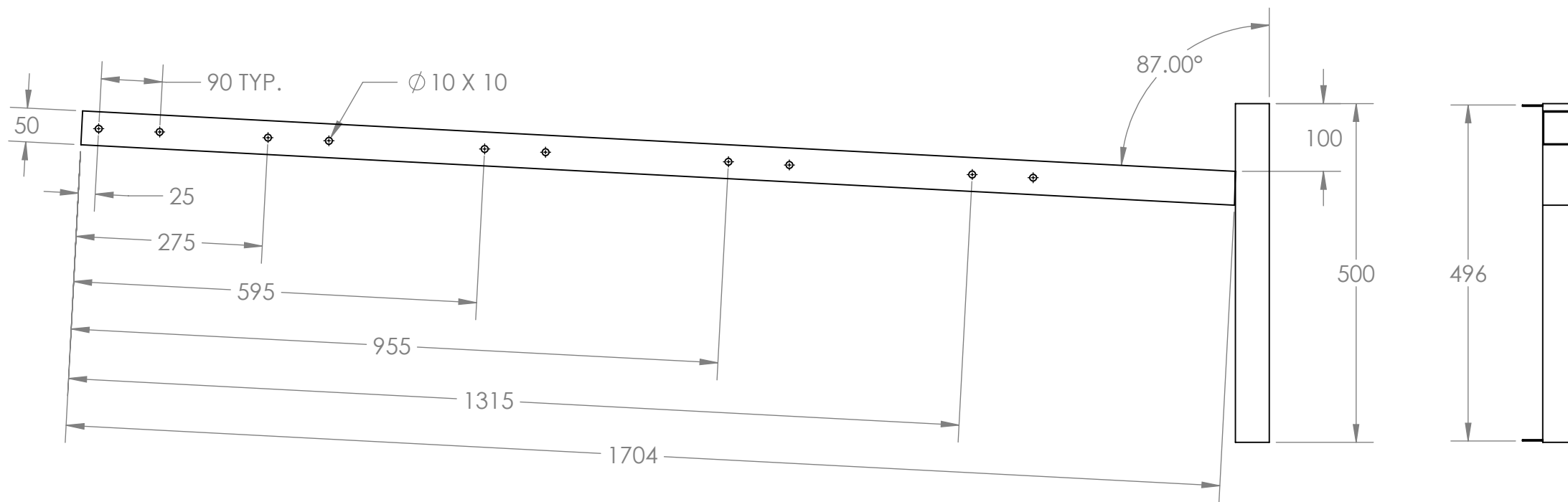
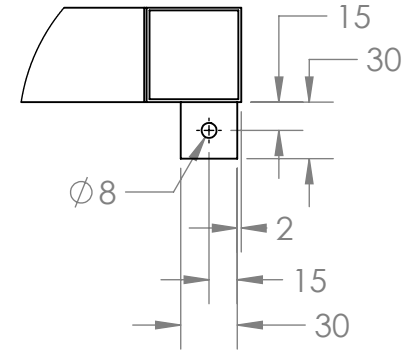
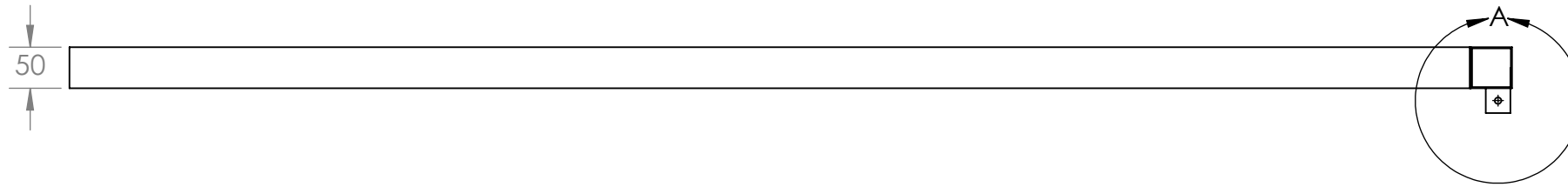


ITEM NO.	DESCRIPTION	QTY.
1	LEFT UPRIGHT	1
2	DUMBBELL ARMS	4
3	KETTLEBELL TRAY	1
4	1" PLATE ARMS	1
5	RIGHT UPRIGHT	1
6	BACKER PLATE	10
7	50x50 TUBE CAP	6
8	10mm WASHER	48
9	BOLT M10 x 65	20
10	LOCKNUT M10	24
11	BOLT M10 x 16	4

COMMENTS:		CAP BARBELL	
		ITEM NUMBER: RK-46	
<small>PROPRIETARY AND CONFIDENTIAL</small> <small>THE INFORMATION CONTAINED IN THIS DRAWING IS THE SOLE PROPERTY OF CAP BARBELL. ANY REPRODUCTION IN PART OR AS A WHOLE WITHOUT THE WRITTEN PERMISSION OF CAP BARBELL IS PROHIBITED.</small>		<small>UNLESS OTHERWISE SPECIFIED:</small> <small>DIMENSIONS ARE IN MILLIMETERS</small> <small>TOLERANCES: ±0.5</small> <small>ANGULAR: BEND ±0°30</small> <small>TWO PLACE DECIMAL ±0.25</small> <small>THREE PLACE DECIMAL ±0.13</small>	
		<small>DESCRIPTION:</small> VERTICAL FREE WEIGHT DISPLAY	
<small>FINISH:</small> BLACK HAMMERTONE		<small>DRAWN</small> <small>AR</small>	<small>DATE</small> 4/10/14

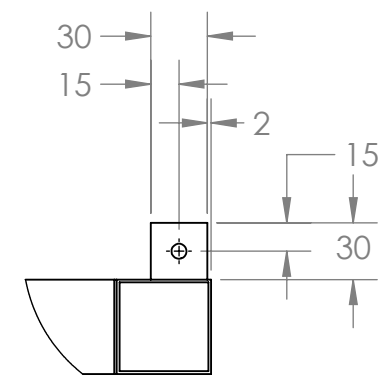
RIGHT UPRIGHT

DETAIL A
SCALE 1 : 4

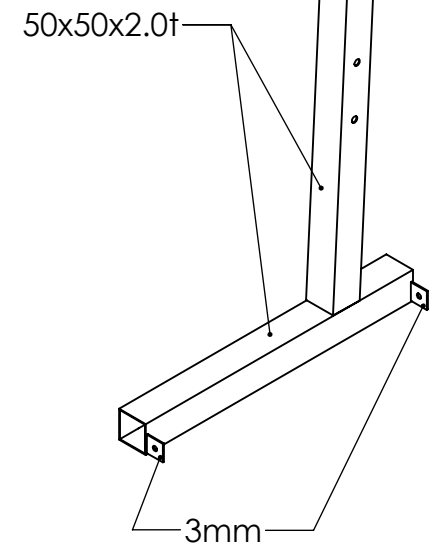
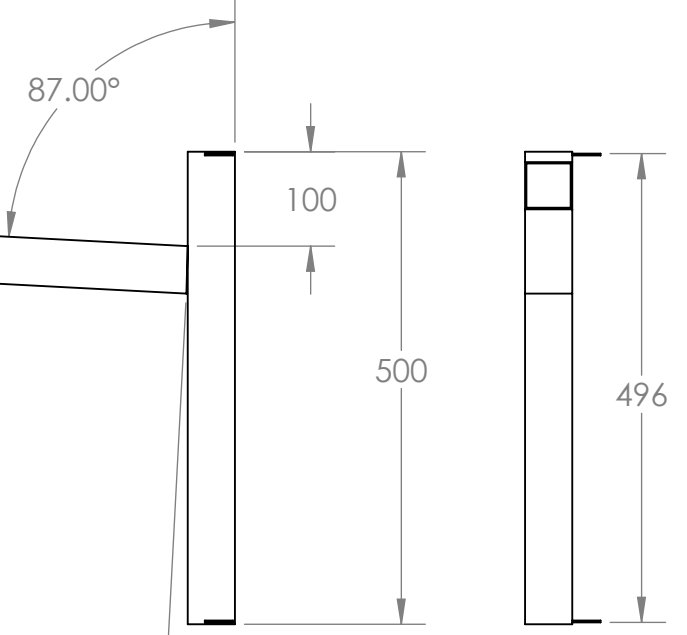
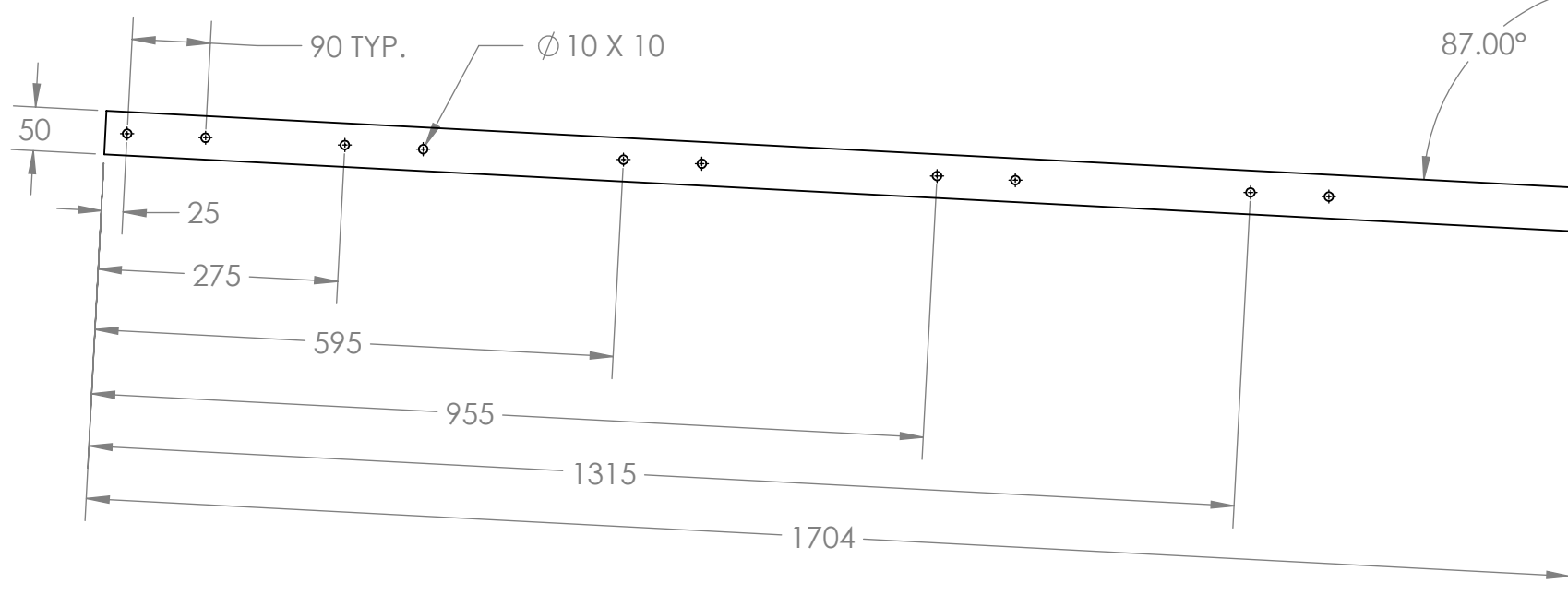


COMMENTS:		CAP BARBELL	
		ITEM NUMBER: RK-46	
<small>PROPRIETARY AND CONFIDENTIAL</small> THE INFORMATION CONTAINED IN THIS DRAWING IS THE SOLE PROPERTY OF CAP BARBELL. ANY REPRODUCTION IN PART OR AS A WHOLE WITHOUT THE WRITTEN PERMISSION OF CAP BARBELL IS PROHIBITED.	<small>UNLESS OTHERWISE SPECIFIED:</small> DIMENSIONS ARE IN MILLIMETERS TOLERANCES: ±0.5 ANGULAR: BEND ±0°30' TWO PLACE DECIMAL ±0.25 THREE PLACE DECIMAL ±0.13	DESCRIPTION:	REV
		VERTICAL FREE WEIGHT DISPLAY FINISH: BLACK HAMMERTONE	DRAWN AR DATE 4/10/14

LEFT UPRIGHT



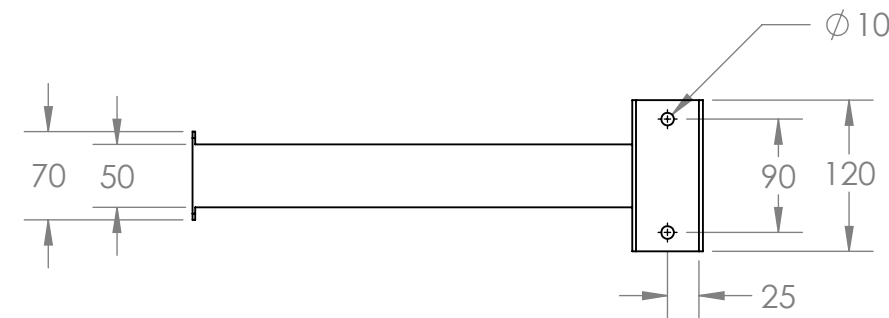
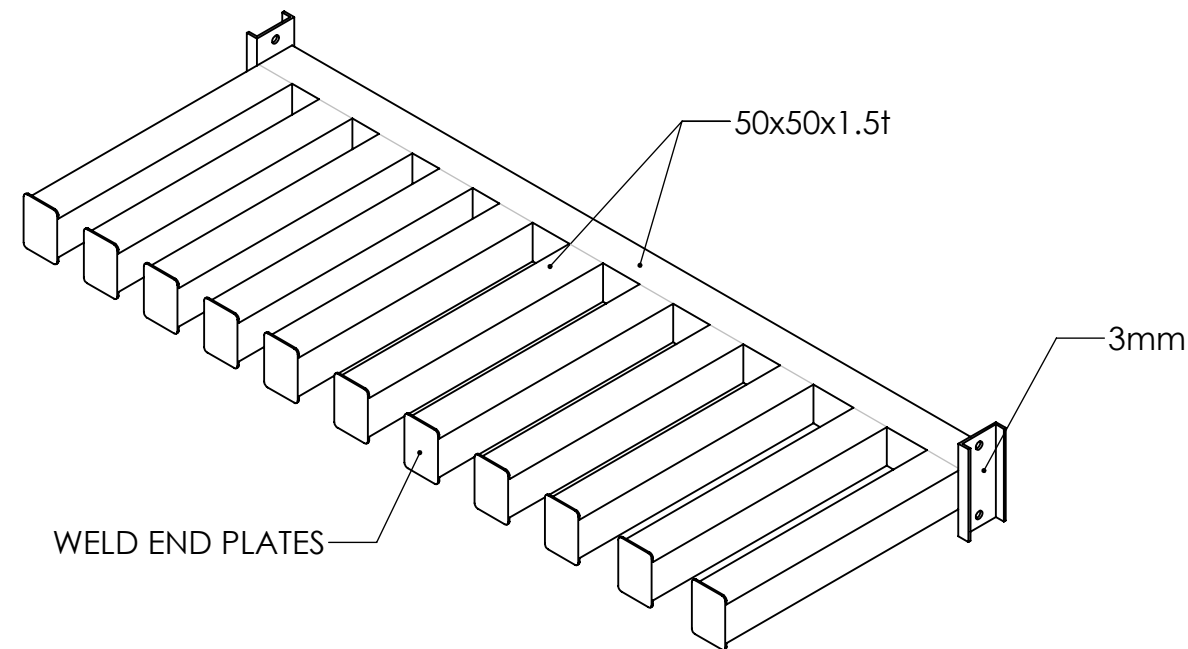
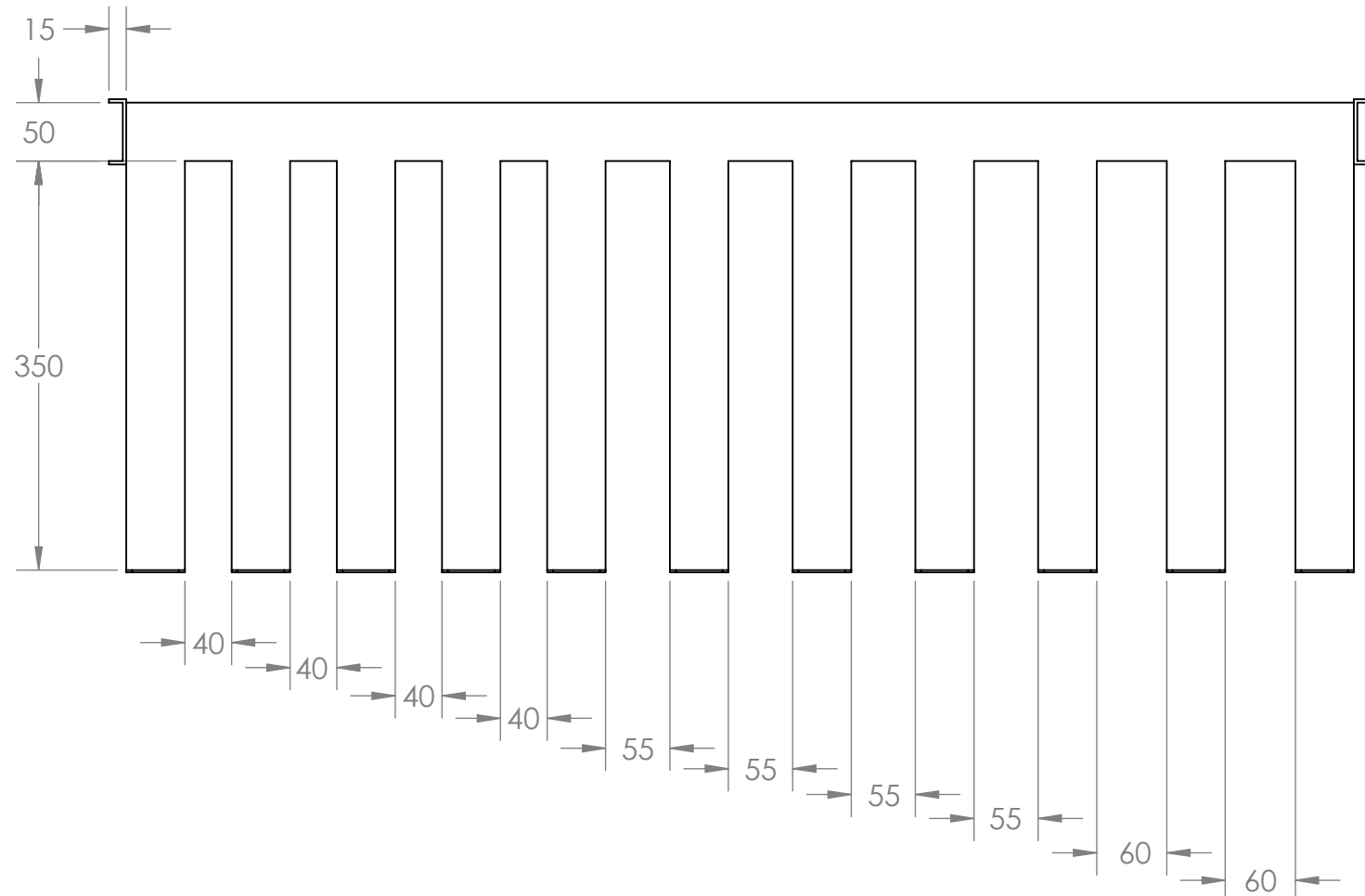
DETAIL A
SCALE 1 : 4



COMMENTS:		CAP BARBELL	
		ITEM NUMBER: RK-46	
PROPRIETARY AND CONFIDENTIAL THE INFORMATION CONTAINED IN THIS DRAWING IS THE SOLE PROPERTY OF CAP BARBELL. ANY REPRODUCTION IN PART OR AS A WHOLE WITHOUT THE WRITTEN PERMISSION OF CAP BARBELL IS PROHIBITED.	UNLESS OTHERWISE SPECIFIED: DIMENSIONS ARE IN MILLIMETERS TOLERANCES: ±0.5 ANGULAR: BEND ±0°30 TWO PLACE DECIMAL ±0.25 THREE PLACE DECIMAL ±0.13	DESCRIPTION: VERTICAL FREE WEIGHT DISPLAY	REV
		FINISH: BLACK HAMMERTONE	DRAWN AR DATE 4/10/14

DUMBBELL ARMS

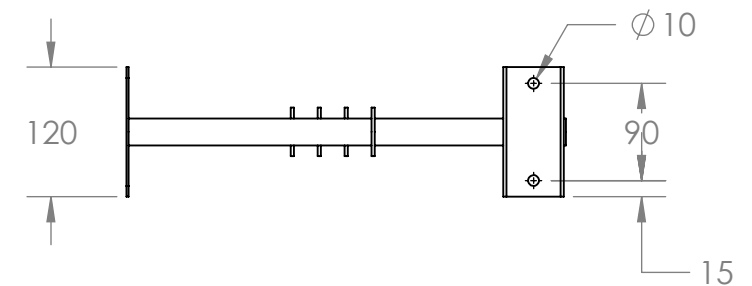
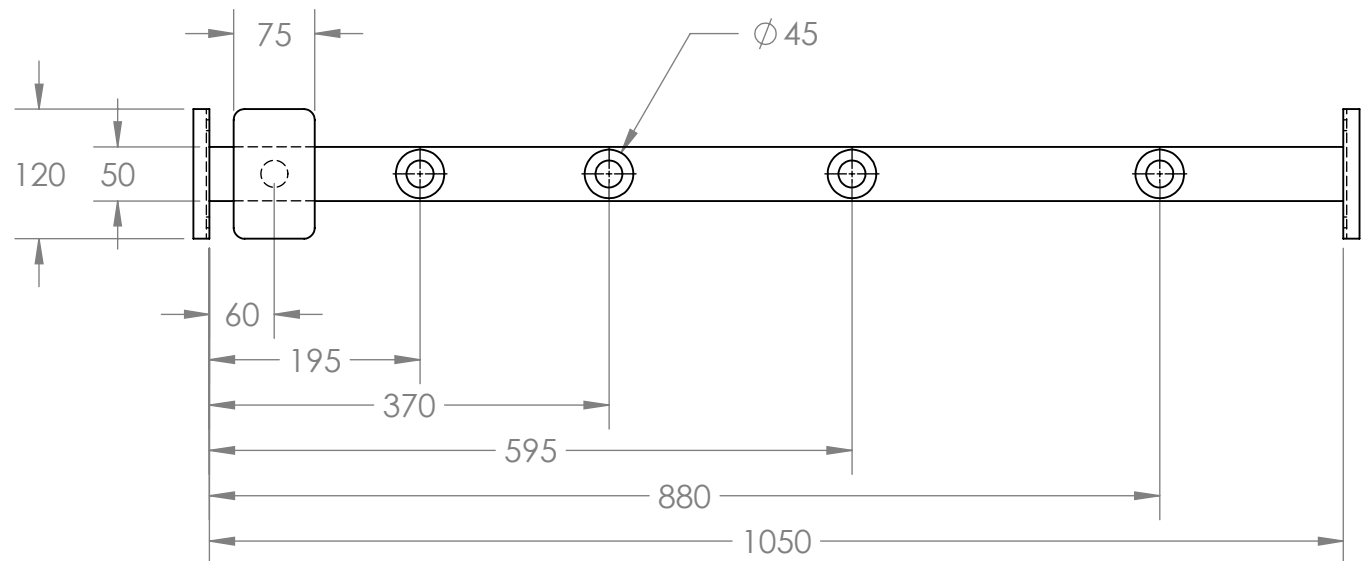
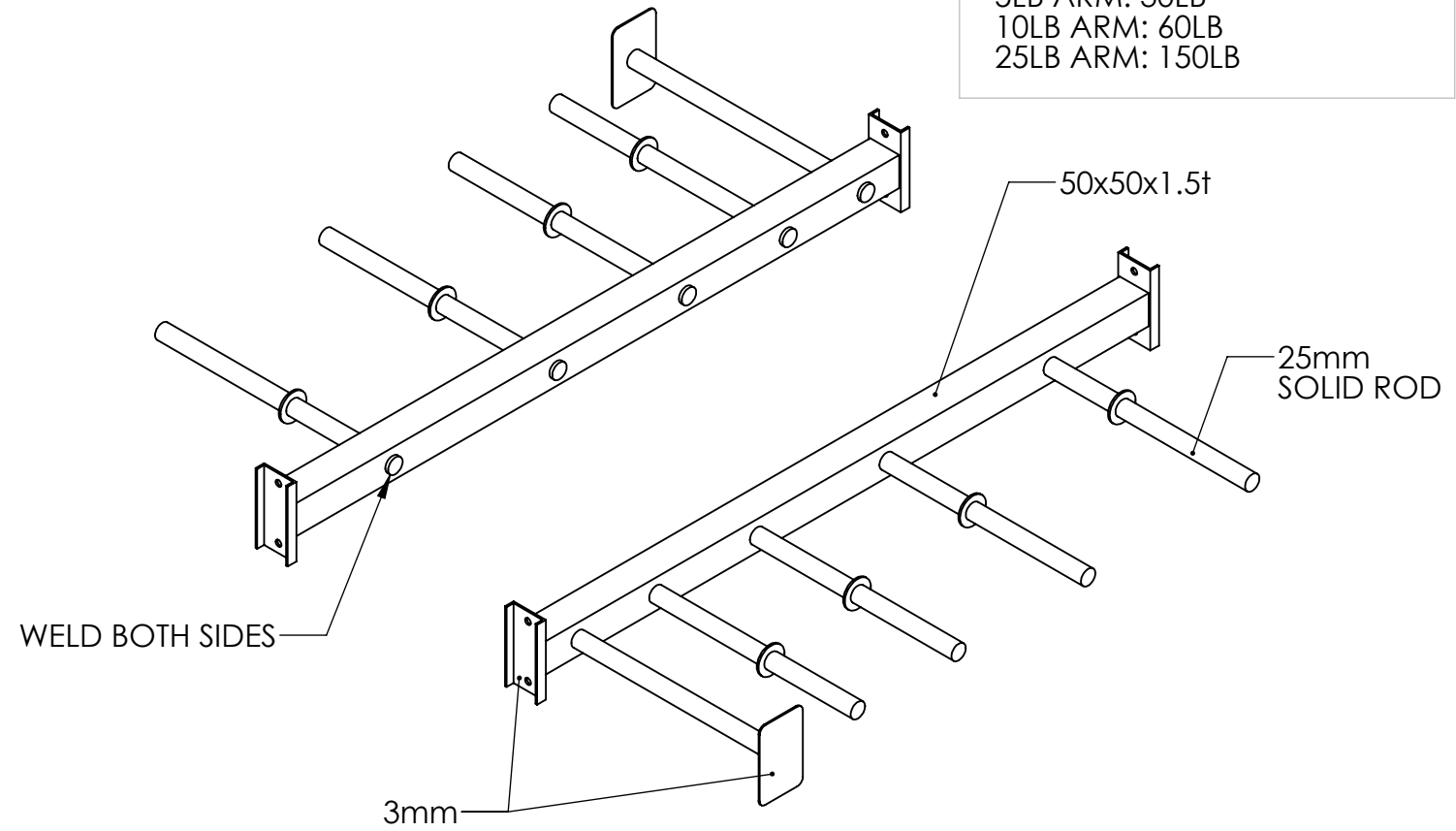
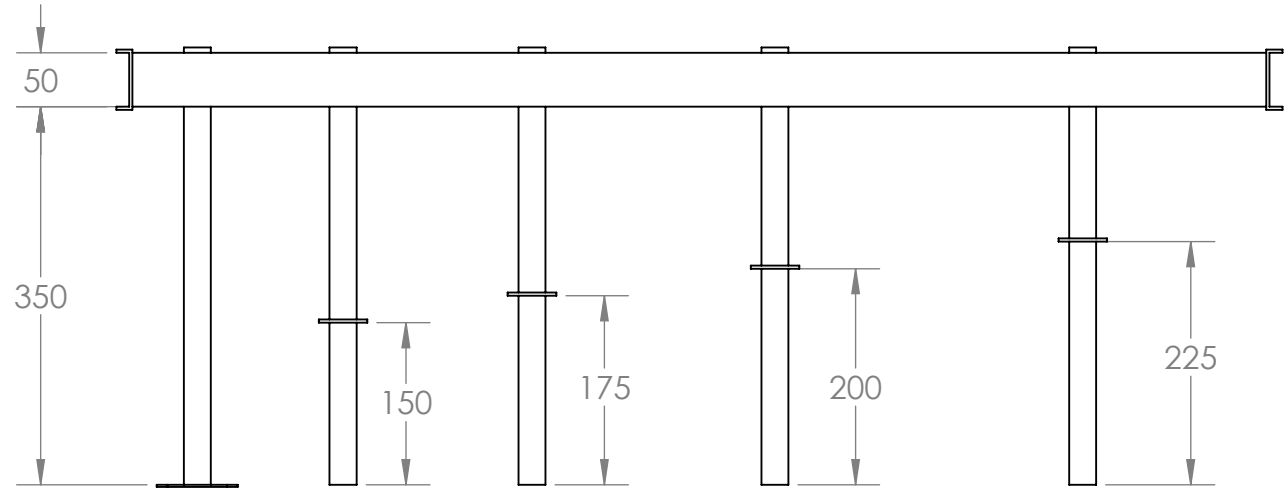
TOTAL MAX CAPACITY: 600LB



COMMENTS:		CAP BARBELL	
		ITEM NUMBER: RK-46	
PROPRIETARY AND CONFIDENTIAL THE INFORMATION CONTAINED IN THIS DRAWING IS THE SOLE PROPERTY OF CAP BARBELL. ANY REPRODUCTION IN PART OR AS A WHOLE WITHOUT THE WRITTEN PERMISSION OF CAP BARBELL IS PROHIBITED.	UNLESS OTHERWISE SPECIFIED: DIMENSIONS ARE IN MILLIMETERS TOLERANCES: ± 0.5 ANGULAR: BEND $\pm 0^{\circ}30$ TWO PLACE DECIMAL ± 0.25 THREE PLACE DECIMAL ± 0.13	DESCRIPTION: VERTICAL FREE WEIGHT DISPLAY	REV
		FINISH: BLACK HAMMERTONE	DRAWN AR DATE 4/10/14

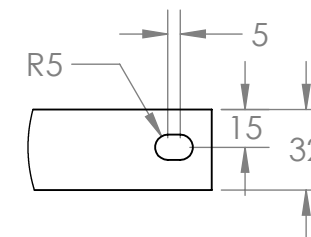
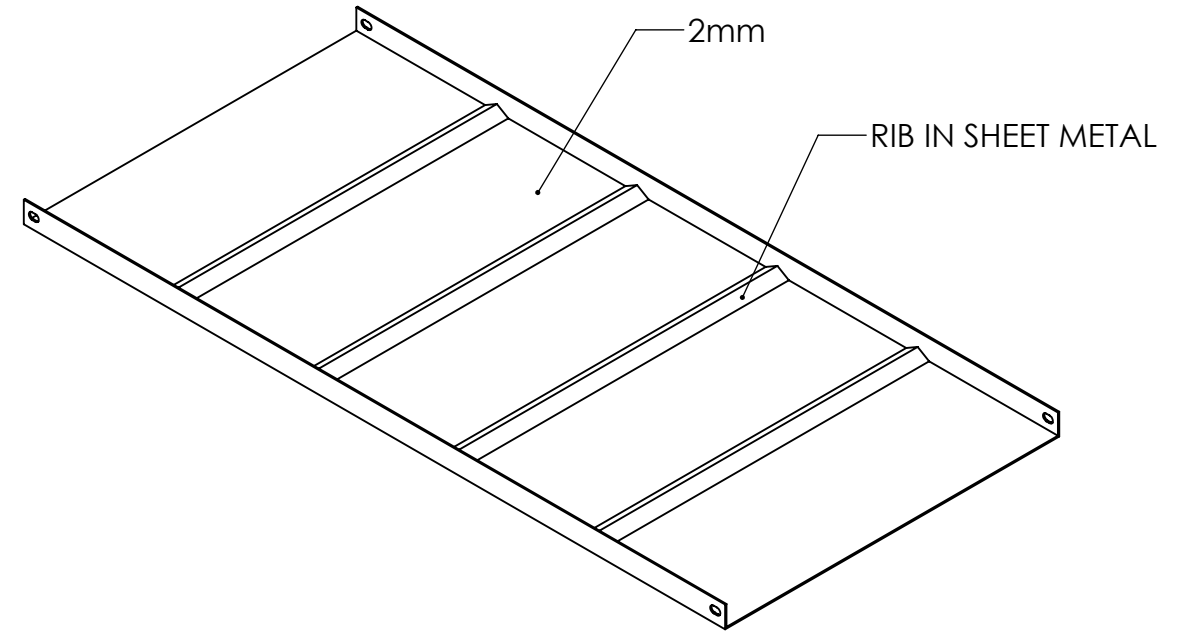
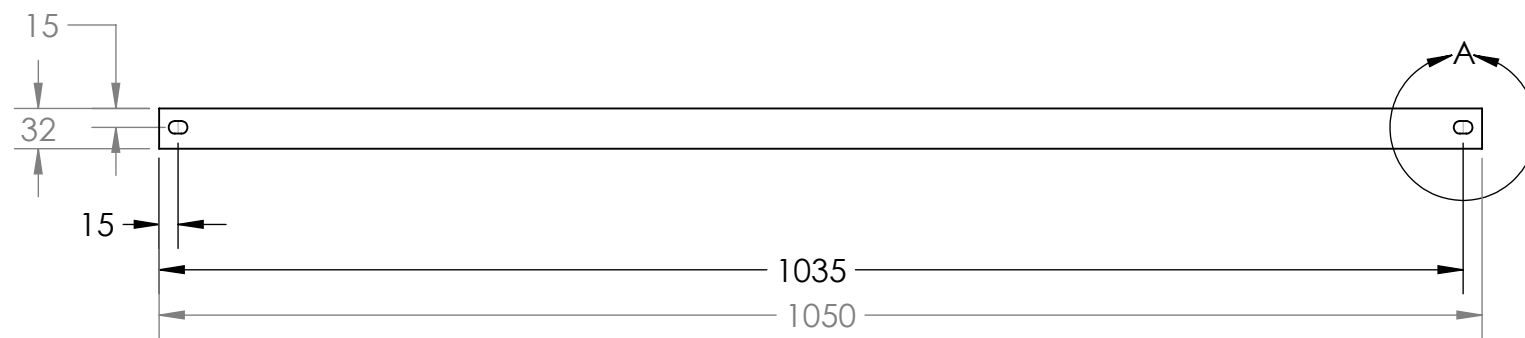
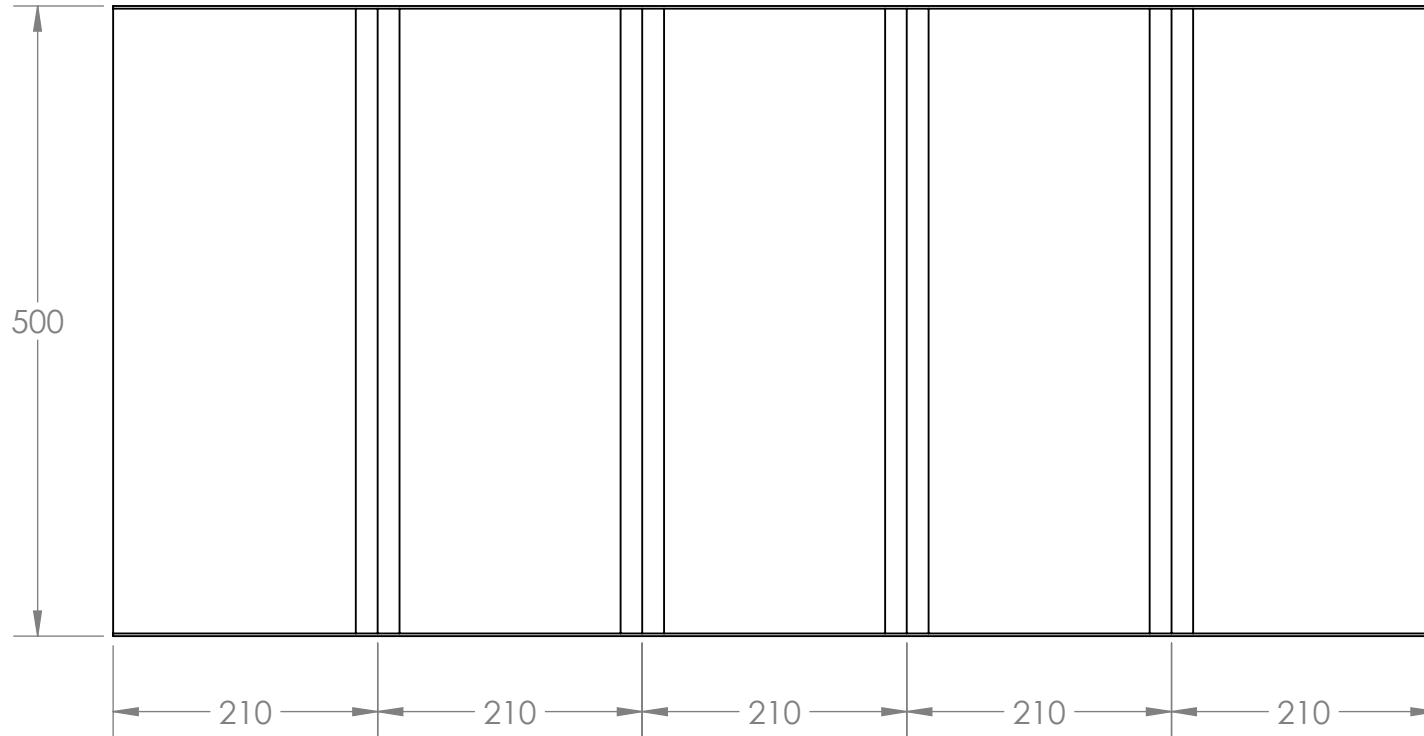
1" PLATE ARMS

TOTAL MAX CAPACITY: 255LB
 2.5LB ARM: 15LB
 5LB ARM: 30LB
 10LB ARM: 60LB
 25LB ARM: 150LB



COMMENTS:		CAP BARBELL	
		ITEM NUMBER:	
		RK-46	
PROPRIETARY AND CONFIDENTIAL		UNLESS OTHERWISE SPECIFIED:	
THE INFORMATION CONTAINED IN THIS DRAWING IS THE SOLE PROPERTY OF CAP BARBELL. ANY REPRODUCTION IN PART OR AS A WHOLE WITHOUT THE WRITTEN PERMISSION OF CAP BARBELL IS PROHIBITED.		DIMENSIONS ARE IN MILLIMETERS TOLERANCES: ±0.5 ANGULAR: BEND ±0°30 TWO PLACE DECIMAL ±0.25 THREE PLACE DECIMAL ±0.13	
		DESCRIPTION:	REV
		VERTICAL FREE WEIGHT DISPLAY	
		FINISH: BLACK HAMMERTONE	DRAWN AR DATE 4/10/14

KETTLEBELL TRAY

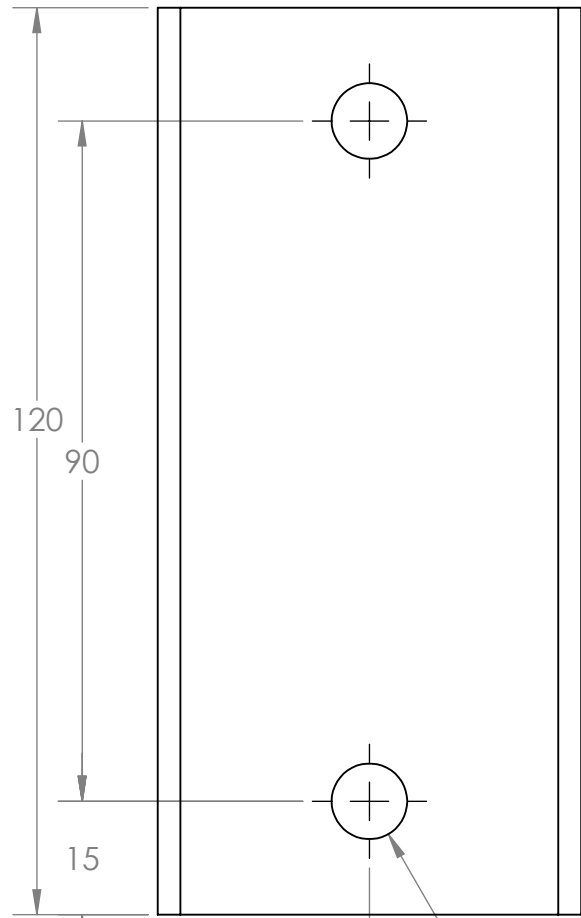
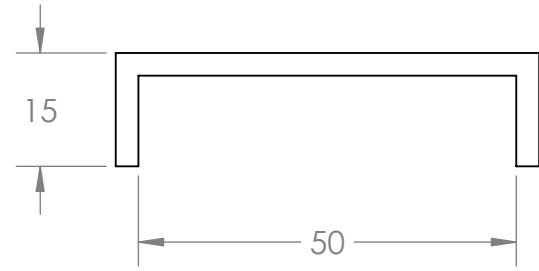


DETAIL A
SCALE 1 : 3

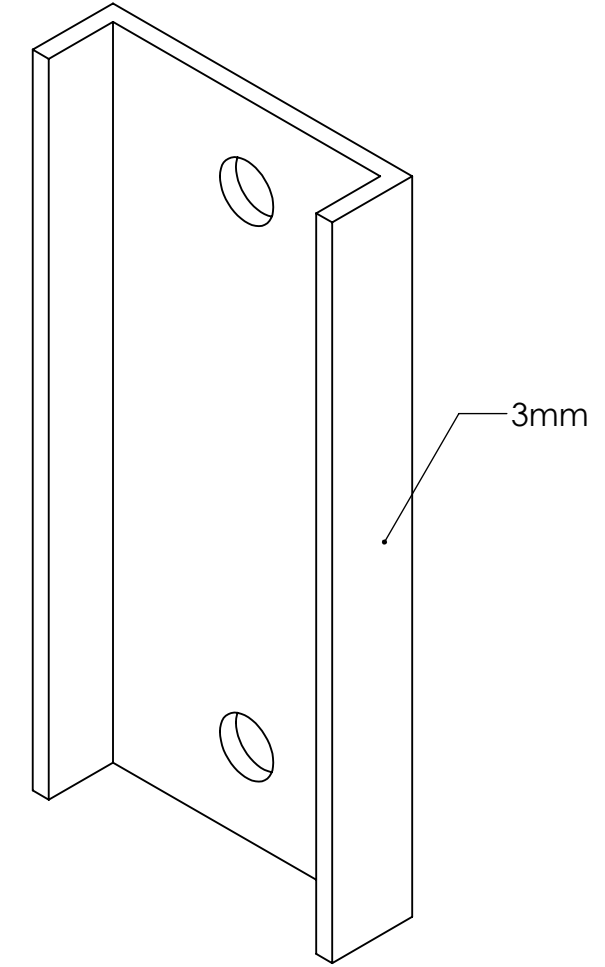


COMMENTS:		CAP BARBELL	
		ITEM NUMBER: RK-46	
PROPRIETARY AND CONFIDENTIAL THE INFORMATION CONTAINED IN THIS DRAWING IS THE SOLE PROPERTY OF CAP BARBELL. ANY REPRODUCTION IN PART OR AS A WHOLE WITHOUT THE WRITTEN PERMISSION OF CAP BARBELL IS PROHIBITED.	UNLESS OTHERWISE SPECIFIED: DIMENSIONS ARE IN MILLIMETERS TOLERANCES: ±0.5 ANGULAR: BEND ±0°30 TWO PLACE DECIMAL ±0.25 THREE PLACE DECIMAL ±0.13	DESCRIPTION:	REV
		VERTICAL FREE WEIGHT DISPLAY	
FINISH: BLACK HAMMERTONE		DRAWN AR	DATE 4/10/14

BACKER PLATE



Ø 10 x 2



COMMENTS:		CAP BARBELL	
		ITEM NUMBER: RK-46	
PROPRIETARY AND CONFIDENTIAL THE INFORMATION CONTAINED IN THIS DRAWING IS THE SOLE PROPERTY OF CAP BARBELL. ANY REPRODUCTION IN PART OR AS A WHOLE WITHOUT THE WRITTEN PERMISSION OF CAP BARBELL IS PROHIBITED.	UNLESS OTHERWISE SPECIFIED: DIMENSIONS ARE IN MILLIMETERS TOLERANCES: ±0.5 ANGULAR: BEND ±0°30' TWO PLACE DECIMAL ±0.25 THREE PLACE DECIMAL ±0.13	DESCRIPTION: VERTICAL FREE WEIGHT DISPLAY	REV
		FINISH: BLACK HAMMERTONE	DRAWN AR DATE 4/10/14