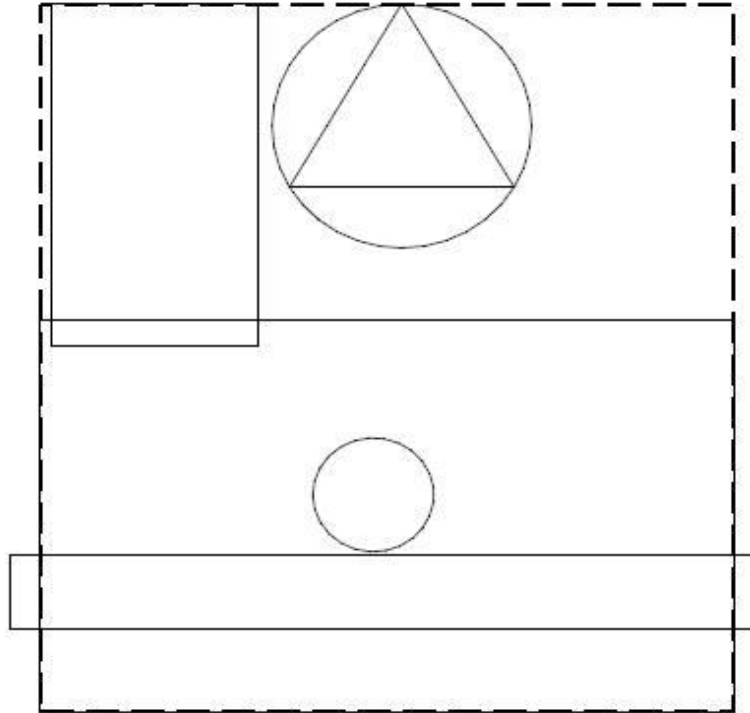




ITEM INFORMATION COVER SHEET

ITEM #	MODEL #	MANUFACTURER	ITEM DESCRIPTION	CONTRACTOR INFORMATION			REMARKS	UTILITY INFORMATION		
				I	F	C		ELECTRICAL	SUPPLY	MECHANICAL: WASTE
TS101.E	7452	NCR	FOR PLACEMENT ONLY - ORDERED BY MEIJER ITS - Cash Register w/ drawers- scanner- display-reader- and cables. PC under counter. Outdoor Garden.	VND	ITS	EC CC	NCR to install NCR equipment. E.C. to provide power. Communications contractor to provide cable to register.			

PARTS LIST:



EQUIPMENT CELL INFORMATION

Date Revised:	7/25/2022
Date Created:	
Cell library:	layout_common equipment
Cell name(s):	CETS101.E

Additional Information:



ITEM NUMBER:

TS101.E

I AM THE NCR REALPOS™ 82XRT

POS Workstation



For more information,
visit www.ncr.com, or retail@ncr.com.





The NCR RealPOS 82_{XRT} delivers extreme retail technology

With over 125 years of retail innovation and experience, NCR is a global technology leader committed to providing advanced point-of-sale (POS) solutions to the retail market. The NCR RealPOS 82_{XRT} delivers the ideal platform for extending POS capabilities to improve associate productivity and enhance the shopping experience.

Exceptional performance and scalability

The NCR RealPOS 82_{XRT} delivers extreme power and scalability, providing the performance you need, when you need it. Featuring the advanced Intel® Core™ Processor Family, the NCR RealPOS 82_{XRT} offers improved adaptive performance that brings more intelligent processing power to the POS.

Enhanced manageability

The NCR RealPOS 82_{XRT} provides multitiered systems management capabilities to maximize system availability and help reduce support costs. With Intel Active Management Technology (Intel AMT), you have visibility to system health with secure out-of-band remote management.

Superior serviceability and reliability

Leading the industry in serviceability, the NCR RealPOS 82_{XRT} features secure, tool-free access to components, enabling fast and easy service and upgrades. Designed to withstand the demands of harsh retail environments, the NCR RealPOS 82_{XRT} provides years of dependable operation.

Enhanced experience for customers and store associates

With extreme power and advanced HD graphics, the NCR RealPOS 82_{XRT} delivers visually smart performance for graphics-intensive applications. You can enhance the consumer experience and enable 1-to-1 marketing through personalized promotions, advertising and loyalty. In addition, your store associates will have a powerful platform for multimedia training, real-time reporting, and the capacity to run multiple applications simultaneously.

Key Features

- Extreme performance with advanced Intel Core Processor Family
- Exceptional flexibility with extensive configuration options and a wide selection of retail peripherals
- Maximum expansion and powered retail connectivity in a retail-hardened design
- Enhanced manageability with LED Dashboard, Intel AMT and integration with NCR Retail Systems Manager (RSM)
- Superior serviceability with tool-free access



Technical Specifications

PROCESSOR

- Intel Core i5-2400 processor
 - Supports Intel vPro™, Turbo Boost and KVM
- Intel Core i3-2120 processor
- Intel Pentium® G850 processor
- Intel Celeron® G540 processor

MOTHERBOARD

- Intel Q67 Express Chipset
- Intel Integrated HD Graphics
- Serial ATA (SATA) 6GB/s storage interface

MEMORY

- 2GB up to 32GB system memory
- Dual-channel DDR3 (1333MHz)
- Four DIMM sockets

STORAGE MEDIA

- Hard disk drive:
 - 250GB or 500GB SATA, 7200rpm
 - On-board RAID with dual hard drive option
 - Quick Swap SATA dock with secure, tool-free front access to both disk drives
- Solid-state drive option
- Internal 24x CD/DVD-ROM drive option

OPERATING SYSTEMS

- Windows® 7 Professional
- Windows Embedded POSReady 7
- Windows Embedded POSReady 2009
- SUSE® Linux® Enterprise for Point-of-Service (SLEPOS)

POWER SUPPLY

- 80 PLUS GOLD certified power supply with 260-watt capacity (non-UPS models)

CONNECTIVITY

- USB ports:
 - 12 standard, expandable to 14
 - 5 Powered USB (12V), expandable to 7
 - 1 Powered USB (24V printer)
 - 6 PC USB (5V)
- RS-232 Ports:
 - 2 standard (0/12V)
 - Additional 2 optional (0/5/12V)
 - Up to 8 total via optional PCI card
- PS/2 for keyboard or mouse
- Cash drawer port
- 10/100/1000MB (GigaBit) Ethernet LAN
- Audio ports:
 - Amplified speaker port
 - Line out
 - Microphone
 - Front headphone jack
- Video interfaces:
 - Onboard VGA, DVI and DisplayPort
 - Dual independent display support standard

EXPANSION

- PCI slots (optional):
 - 1 PCI slot, full-height
 - 1 PCI Express x1 slot, full-height

COLOR OPTIONS

- Charcoal gray or beige

Why NCR?

NCR Corporation (NYSE: NCR) is the global leader in consumer transaction technologies, turning everyday interactions with businesses into exceptional experiences. With its software, hardware, and portfolio of services, NCR enables more than 300 million transactions daily across the retail, financial, travel, hospitality, telecom and technology industries. NCR solutions run the everyday transactions that make your life easier.

NCR is headquartered in Duluth, Georgia with over 26,000 employees and does business in 180 countries. NCR is a trademark of NCR Corporation in the United States and other countries.

SYSTEM MANAGEMENT

- Intel Active Management Technology (AMT)
- Intel Keyboard-Video-Mouse (KVM) Remote Control (with Core i5)
- PXE network boot
- Wake on LAN
- LED Dashboard
- NCR Retail Systems Manager (RSM)

PRODUCT DIMENSIONS

- Compact modular
 - WIDTH 13.36" (33.93cm)
 - HEIGHT 4.56" (11.58cm)
 - DEPTH 15.5" (39.37cm)
- Full-size integrated (excluding peripherals)
 - WIDTH 17.4" (44.2cm)
 - HEIGHT 4.9" (12.45cm)
 - DEPTH 18.7" (47.5cm)

NCR continually improves products as new technologies and components become available. NCR, therefore, reserves the right to change specifications without prior notice.

All features, functions and operations described herein may not be marketed by NCR in all parts of the world. Consult your NCR representative or NCR office for the latest information.

NCR RealPOS is either a registered trademark or trademark of NCR Corporation in the United States and/or other countries. All brand and product names appearing in this document are trademarks, registered trademarks or service marks of their respective holders.



I AM NCR REALPOS™ DYNAKEY™



Want an operator interface that will maximize productivity and minimize training time?

The NCR RealPOS DynaKey provides an innovative user interface that's intuitive to use, resulting in speed and accuracy. The NCR RealPOS DynaKey easily leads users through transactions and allows them to reduce errors and improve productivity. Paired with the optional integrated fingerprint reader and touchscreen, you'll have a very flexible solution for any environment.

Reduces training time and errors, and improves productivity

The NCR RealPOS DynaKey's easy-to-use ATM-like interface leads users through transactions efficiently and accurately increases productivity by presenting the usable options and allowing users to key ahead to speed up transactions.

Increases usability and confidence

The NCR RealPOS DynaKey is designed in conjunction with NCR human factors engineers. It has a 15" color LCD and 36 keys, including eight "dynamic" keys, POS function keys, a numeric keypad and scrolling keys. These features make employees feel more comfortable and confident during the checkout process.

For more information, visit www.ncr.com, or email retail@ncr.com.

Increases flexibility with the capacitive touchscreen option

The capacitive touchscreen option lets the user automate and simplify requests. Product look-ups and point-of-purchase promotions are quick and easy. The capacitive touchscreen option can also be used to combine back-office and POS functionality at the front end.



Why NCR?

With over 125 years of retail experience, NCR is a leading global provider of assisted- and self-service solutions.

We help our clients around the world improve their customer interactions, implement change quickly and proactively, and transform their businesses to become leaders and change agents. We can help you, too.

Key Features

- Brightness control capability
- Additional USB ports
- DVI and VGA interface options
- Dual display support
- Field upgradeable firmware for MSR, keypad and video controller
- Keylock security (default) or biometric fingerprint security (optional)
- VESA mount compliant

Technical Specifications

- 15" active matrix (1024x768) color LCD
- Scaling video processor (800 x 600 minimum; 1280 x 1024 maximum)
- Standard DVI and VGA for display data
- 8 "ATM-like" dynamic keys
- Up/down, forward/backward scrolling keys
- Keylock security (default) or biometrics security (optional)
- Tone speaker
- Multi-color/mode diagnostic LED
- Spill-resistant design

OPTIONS

- Magnetic stripe reader (3-track ISO and JIS)
- Integrated and remote mounting options
- Customer display mount
- Capacitive touchscreen

DIMENSIONS (W x D x H)

- 279.40mm x 508mm x 76.20mm (11" x 20" x 3")

USB-SPECIFIC FEATURES

- 3 USB ports
- Standard USB + power
- 36 user-programmable keys
- Brightness control capability

NCR continually improves products as new technologies and components become available. NCR, therefore, reserves the right to change specifications without prior notice.

All features, functions and operations described herein may not be marketed by NCR in all parts of the world. Consult your NCR representative or NCR office for the latest information.

NCR RealPOS and DynaKey are either a registered trademark or trademark of NCR Corporation in the United States and/or other countries. All brand and product names appearing in this document are trademarks, registered trademarks or service marks of their respective holders.



NCR RealPOS™ Two-Sided Multifunction Printer, Series II

Looking for an environmentally friendly multifunction printer that can speed customers through the checkout process?

YES

The latest NCR RealPOS Two-Sided Multifunction Printer is taking green printing to the next level while enhancing customer satisfaction.

NCR is now offering printers with a new Lean Receipt Utility which supports advanced power and paper management options. By adding these new capabilities to the environmentally friendly 2ST printer, NCR has once more raised the bar for receipt printing. NCR's latest 2ST printer not only offers improved printer efficiency, but it also impacts customer satisfaction by speeding customers through the checkout process, providing options for promotional information and coupons on receipts and, of course, reducing the length of long, bulky receipts.

- **Save energy costs with advanced power management**

The Lean Receipt Utility power-saving options allow you to aggressively control power consumption by up to 50%. New features include standby and power-off mode, which give customers the ability to reduce their power consumption. The printer goes into standby mode when it's not being used; however, once a receipt is received, it quickly wakes up and prints. The power-off mode can be used to shut the printer down at night or during slow business hours. The printer wakes up when the paper feed button is pressed. Both options are fully customizable, giving you control.

- **Reduce environmental impact and paper costs**

The Lean Receipt Utility also allows you to reduce the margins and spacing on receipts in order to utilize more white space. With this, you could reduce your usage of receipt paper by up to 41%. Moreover, with 2ST you could save between 5%-25% on your annual receipt paper investment by reducing freight and storage costs.

- **Promote your brand to your customers**

With ample memory to store corporate logos and graphics, you'll have an enhanced advertising vehicle that allows you to control and update your communication by transaction or by store. The two one-sided color options help draw attention to your promotions, in black or blue.



For more information, visit www.ncr.com,
or email retail@ncr.com.

Key Features

- 90 lines per second, 300mm (12 inches) per second
- Lean Receipt Utility
- Automatic split receipt feature
- Two-sided paper detection sensor to allow the printer to switch to one-sided mode automatically
- Thermal print head early failure detection
- 50K storage space for up to 25 macros in printer
- Rotary knife impact slip station with forms alignment indicator
- Drop-in paper loading with “paper low” and “paper out” sensors
- Color printing: black/black; black/blue
- Flash memory: 8MB

Why NCR?

With over 125 years of retail experience, NCR is a leading global provider of assisted- and self-service solutions. We help our clients around the world improve their customer interactions, implement change quickly and proactively, and transform their businesses to become leaders and change agents. We can help you, too.

Technical Specifications

PRODUCT DIMENSIONS

Non-Check Flip Model

- WIDTH 190mm (7.48")
- HEIGHT 181.5mm (7.14")
- DEPTH 346mm (13.62")
- WEIGHT 4.7kg (10.5lbs)

Check Flip Model

- WIDTH 190mm (7.48")
- HEIGHT 181.5mm (7.14")
- DEPTH 346 mm (13.62")
- WEIGHT 5.0kg (11lbs)

THERMAL RECEIPT STATION

- Thermal, fixed head, 203dpi
- Print speed – 90 lines per second/12" per second (front only)
- Simultaneous front and back printing: 10" per second
- Dual RS232/USB interface board
- Protocols supported: Printer Class, Serial, HID and I/O Network
- Supported Emulation Mode: IBM 4610 Series command set

OPTIONS

- Check “flip” module – prints both sides of the check

- 58mm receipt paper guide

BAR CODE GENERATION

- UPS-A, UPC-E, JAN13 (EAN), JAN8 (EAN), Code 39, Code 128,
- Interleaf 2 of 5, Code-bar, PDF417, GS1 DataBar™, QR Barcode

PRINT MODES

- Standard, compressed, double high, double width, upside down, rotated, underline, scalable, bold, superscript, italic, subscript, reverse print

SLIP PAPER REQUIREMENTS

- Up to 8.5" wide
- Paper thickness up to five part forms/ maximum (.40mm)

LEAN RECEIPT UTILITY

- Reduces paper usage and power consumption
- Seven paper reduction options, including reducing white space, line spacing and margins
- Seven power reduction options, including standby and sleep modes

CHARACTER SETS

- SBCS Code Page 437(default), 850, 852, 860, 863, 865, 858, 866, 1252, 1256, Katakana, 874, 862, 864
- DBCS Code Page 932(default), 936(op), 949(op), 950(op), Unicode (UTF-16)

COLORS

- Beige or charcoal gray

POWER REQUIREMENTS

- 24V dedicated power connection
- Optional external 75-watt power supply available

ENVIRONMENTAL CONDITIONS

- Operating temperature: 5°C to 50°C
- Operating humidity: 10%-90%

PRINT DRIVERS

- OPOS (OLE for Retail POS), TAPS, JavaPOS™ for Windows® and Linux®

Columns per line	Standard	Compressed
(80mm/58mm paper)	44/32	56/42
Character pitch (cpi)	15.6/15.6	20.3/20.3
Character cell	13x24/13x24	10x24/10x24



Experience a new world of interaction

NCR RealPOS Two-Sided Multifunction Printer, Series II

NCR continually improves products as new technologies and components become available. NCR, therefore, reserves the right to change specifications without prior notice.

All features, functions and operations described herein may not be marketed by NCR in all parts of the world. Consult your NCR representative or NCR office for the latest information.

NCR RealPOS is either a registered trademark or trademark of NCR Corporation in the United States and/or other countries. All brand and product names appearing in this document are trademarks, registered trademarks or service marks of their respective holders.

Technical Specifications



2181 Full Size Cash Drawer

NCR's New Plastic Full Size Cash Drawer

Designed to Fit the NCR RealPOS 80xrt Integrated Solution

- Plastic Chassis
- Two Slip Slots
- US and Euro removable till options
- Optional keylocks (none, 2 position, 3 position)
- Beige and Charcoal Gray
- Tested for 1 million lifecycles
- Solenoid designed to prevent power surge damage
- Mounting Features
- Emergency Release
- Removable Communication Cable
- Dimensions:
17.4" W x 18.4" L x 5.0" H w/ feet
- RoHS compliant